

Universal Sling Bars

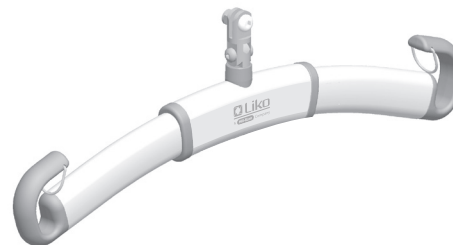


Instruction Guide

Applies to the following models:

Universal SlingBar 350
Universal SlingBar 450
Universal SlingBar 600
Universal TwinBar 670 Twin
Universal SlingBar 350 QRH
Universal SlingBar 450 QRH
Universal SlingBar 600 QRH
Universal TwinBar 670 Twin QRH
Universal SlingBar 350 R2R
Universal SlingBar 450 R2R

Prod. No. 3156074
Prod. No. 3156075
Prod. No. 3156076
Prod. No. 3156077
Prod. No. 3156084
Prod. No. 3156085
Prod. No. 3156086
Prod. No. 3156087
Prod. No. 3156094
Prod. No. 3156095



Product Description

Liko's Universal sling bars are available in various models and with two assembly options, fixed assembly or with Quick-release Hook. Most of the Universal sling bars are available with the Liko's Quick-release Hook system as standard.

Liko Universal Sling Bars complies with the requirements of EN ISO 10535.

Maximum load: 300 kg / 660 lbs.

IMPORTANT!

Read the instruction guide for both the patient lift and lifting accessories before use. Lifting and transferring a person always involves a certain level of risk. It is important to completely understand the contents of the instruction guide. The equipment should be used by trained personnel only. Please contact your Hill-Rom distributor in the event of any uncertainties or questions.

Safety Instructions

Different maximum loads may apply to different products on the assembled lift system: lift, sling bar, sling and any other accessories used. For the assembled lift system, the maximum load is always the lowest maximum load rating for any of the components. Study the markings on the lift and lifting accessories or contact your Hill-Rom representative in the event of questions.

Before lifting, always make sure that the sling's strap loops are correctly fastened to the sling bar hooks when the sling strap is extended, but before the patient is lifted from the underlying surface.

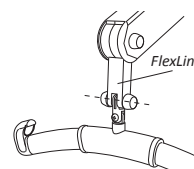
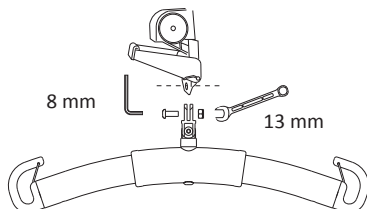
For safety, load must be applied to all sling bar hooks on the sling bar during the lift!

Assembly

Fixed assembly to lift

Likorall™ 242 S/ES overhead lift, Likorall™ 243 ES overhead lift, Liko MasterLift 2300, Golvo™ mobile lift, Uno™ 102 rev.01 mobile lift, Uno™ 200, Viking™ mobile lift and LikoLight™ mobile lift.

Intended for the following sling bars: Universal SlingBar 350, 450, 600 and 670 Twin (Prod. No. 3156074 - 3156077)



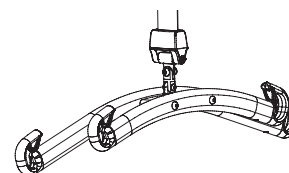
Fixed assembly to lift:

LikoGuard™ overhead lift

Intended for: Universal SlingBar 670 Twin, Prod. no. 3156077

NOTE! Require, Fixed kit 4, Prod. no. 3308860

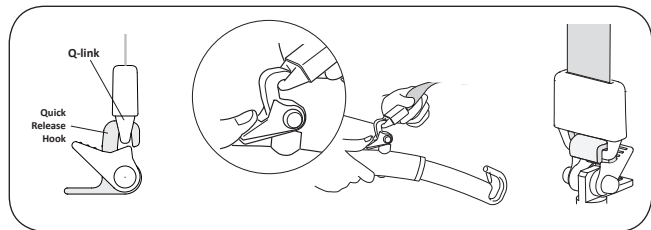
Shall be assembled by personnel authorized by Hill-Rom!



See assembly alternatives with Quick-release Hook

Assembly with Quick-release Hook to lift

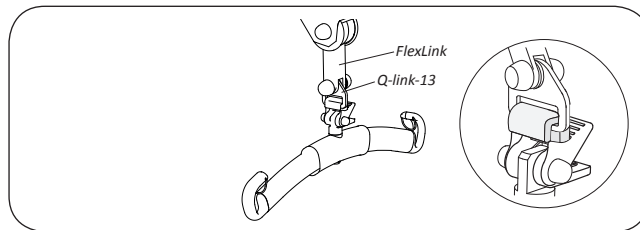
Intended for the following sling bars: Universal SlingBar 350 QRH, 450 QRH, 600 QRH and Twinbar 670 QRH (Prod. No. 3156084 - 3156087). Universal Sling-Bar 350 R2R and 450 R2R (Prod. No. 3156094 - 3156095).



Fits: Golvo™ mobile lift*, Likorall™ 242 S/ES R2R overhead lift, Likorall™ 243 ES overhead lift*, Likorall™ 250 ES overhead lift* and Multirall™ overhead lift.

**if equipped with Q-link (Prod. No. 31590005).*

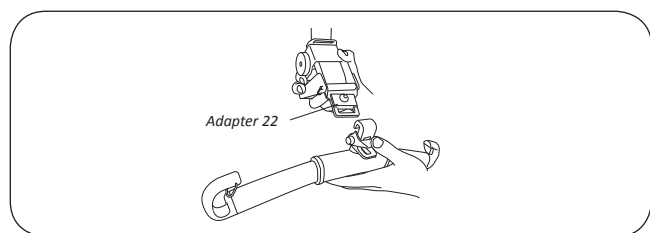
See applicable assembly instruction.



Fits: Uno™ 102 rev.01 mobile lift*, Viking™ mobile lift* and LikoLight™ mobile lift*.

**if equipped with Q-link 13 (Prod. No. 3156509).*

See applicable assembly instruction.

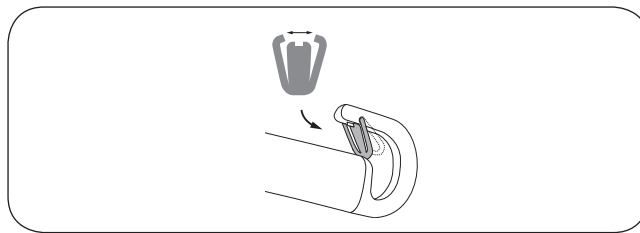


Fits: Liko MasterLift 2300* and Likorall™ 242 S/ES overhead lift*

**if equipped with Adapter 22 (Prod. No. 3156505).*

See applicable assembly instruction.

Installation of latches



After installation, check that the latch locks and runs freely in the sling bar hook.

Care and maintenance

For safe and trouble-free operation, a few routine procedures should be performed every day, before the sling bar is in use:

- Check the screw and locking nut that attaches the sling bar
- Check the function of latches and that the latches are intact; missing or damaged latches must always be replaced
- When using a Quick-release Hook system, check that the Quick-release Hook is correctly fastened to the lift and the sling bar
- Before lifting, check that the lifting accessory hangs vertically and can move freely.

When necessary, clean the lift with a moist cloth. Find more detailed information regarding cleaning and disinfection of your Liko product in the document *Care and Maintenance* at our website: www.liko.com.

Service

A periodic inspection of Universal Sling Bars should be carried out at least once a year.

⚠ Periodic inspection, repair and maintenance may be performed only in accordance with the Liko service manual by personnel authorized by Hill-Rom and using original Liko spare parts.

Expected Life Time

The product has an expected life time of 10 years when correctly handled, serviced and periodically inspected in accordance with Liko's instructions.

Recycling

For instructions on how to recycle your Liko product, please visit our website: www.liko.com.

Product Changes

Liko's products undergo continuous development, which is why we reserve the right to make product changes without prior notice. Contact your Hill-Rom representative for advice and information about product upgrades.

Design and Quality by Liko in Sweden

Hill-Rom's Management system are certified in accordance with ISO 9001 and its equivalent for the medical device industry, ISO 13485.

Hill-Rom's Management system is also certified in accordance with environmental standard ISO 14001.



www.hill-rom.com | www.liko.com

Liko AB
Nedre vägen 100
SE-975 92 Luleå, Sweden
+46 (0)920 474700

Enhancing outcomes for
patients and their caregivers:

Hill-Rom