

Subject: ImageMaker™ FreedomHill™ and LibertyHill™ Entertainment Center and Wardrobe Assembly Instructions

Tools required: Phillips head screwdriver (powered)

Straight blade screwdriver
(powered)

CAUTION:

Due to the size of the complete unit, consider assembly at its final destination.

1. Remove packing and installation materials.

NOTE:

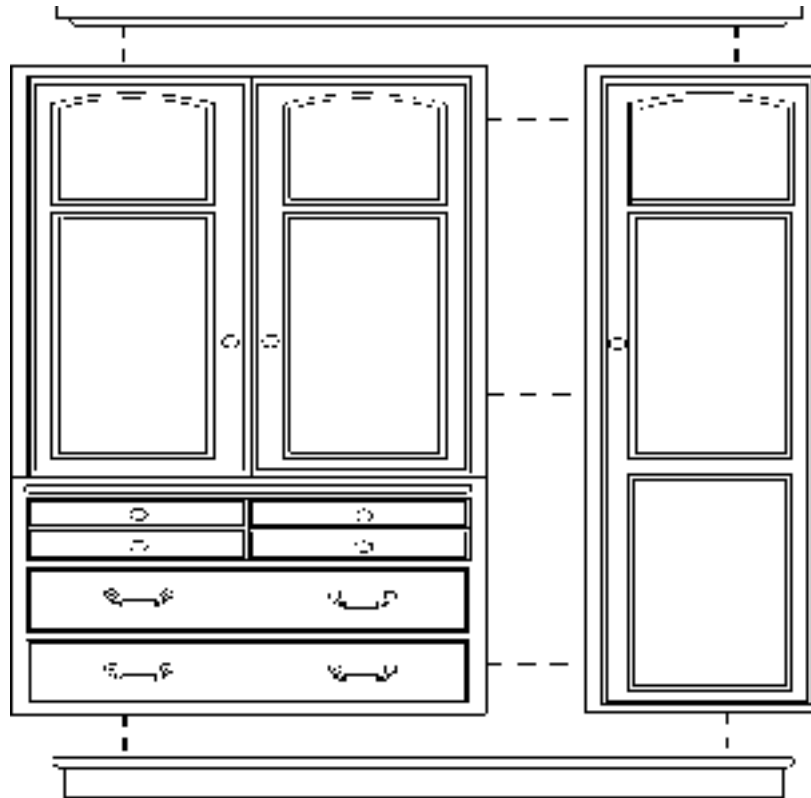
Keep the mounting screws for the crown and base separate.

WARNING:

More than one person is required to lower and position the units. Use proper lifting and/or moving techniques. If proper techniques are not used, personal injury may occur.

2. Carefully lower the backs of the units onto a clean, flat, floor.
3. Position the units side-by-side to the desired configuration with the sides square and flush with each other.

Figure 1. Entertainment Center and Wardrobe Assembly



NOTE:

Figure 1 is an example of only one configuration possible due to a varying number of components and arrangements.

4. Attach the base using the pre-drilled holes and screws provided.
5. Install the levelers on the corners of the base. Make sure all four levelers are at the same height.
6. Attach the crown using the pre-drilled holes and screws provided.

WARNING:

More than one person is required to stand the units upright. Use proper lifting and/or moving techniques. If proper techniques are not used, personal injury may occur.

7. Stand the complete unit upright, and move it to the desired location.
8. Using the levelers, align the unit so the doors and drawers open and close properly.