

Subject: Gallery Wall—Finished Assembly Installation Instructions

Tools required:	Screwdriver	Electric drill
	3/32" (#23) Hex head wrench	Wire strippers
	T-square	Pliers
	Level	Caulking gun
	Tape measure	1/8" drill bit
Parts required:	Pan-head screws (assorted)	Electrical fittings
	Flexible electrical conduit	Wire nuts
	#10 x 1" Self-tapping metal screws	Caulk

Introduction

The Gallery Wall delivers medical gases and electrical services in a prefabricated unit. It also conceals the delivery of these services behind a movable decorative picture or artwork (see figure 1 on page 2). The product comes in either left- or right-hand units.

The product is used within the Labor/Delivery/Recovery/Post-Partum area and any other areas of the facility where medical gases and electrical services must be delivered in an aesthetic manner. Other such areas are Cardiac Care Areas (low acuity), executive areas, or out-patient areas.

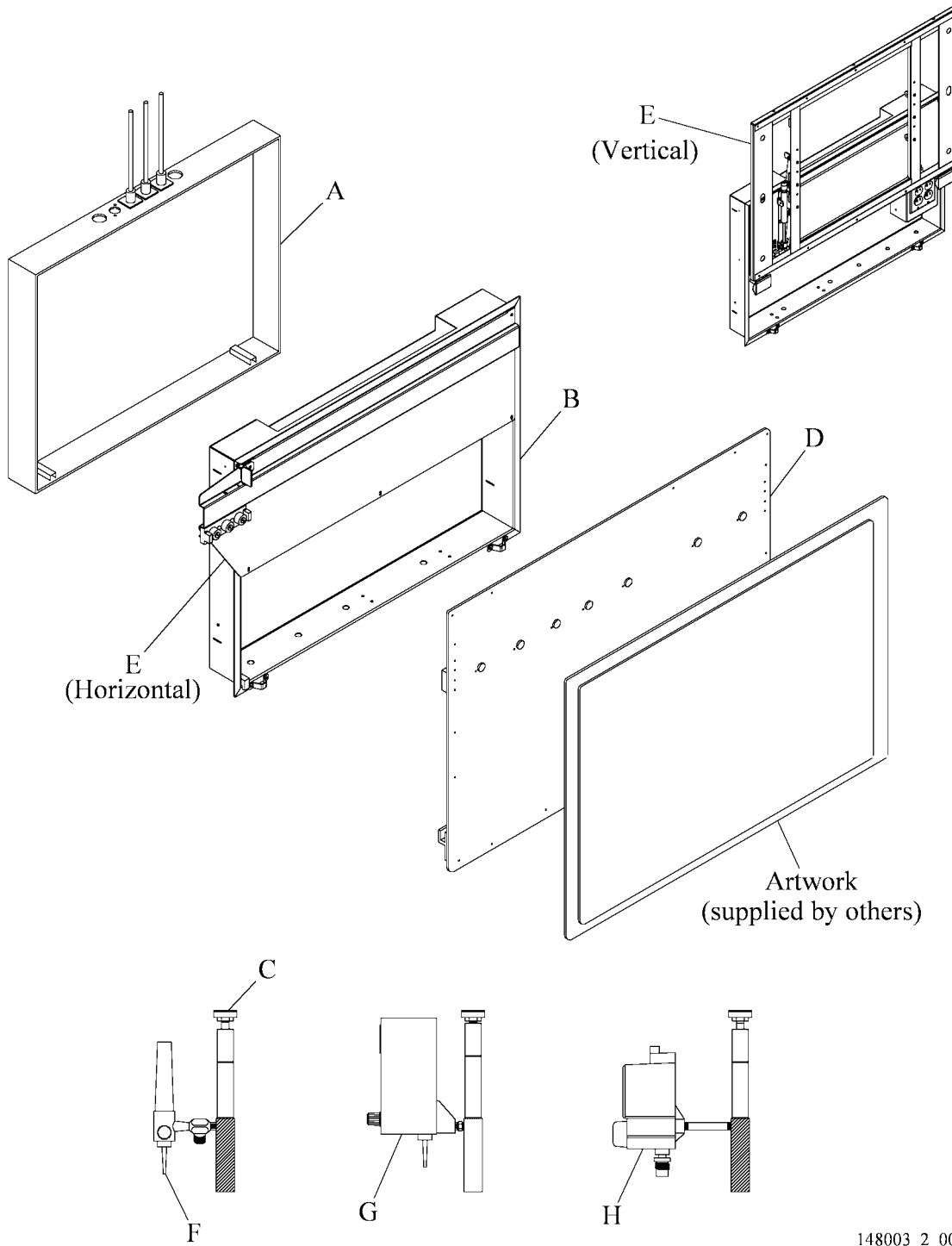
The Gallery Wall delivers oxygen, medical air, or vacuum in a three-gas, four-gas, or five-gas configuration. Electrical receptacles are available on the three-gas and four-gas Gallery Wall.

The Gallery Wall contains these major components (see figure 1 on page 2):

- Rough-in assembly (A)
- Finished assembly (B)
- Medical gas swivel mechanism (C)
- Picture frame assembly (D)
- Cover plate/slide mechanism (E) (horizontal and vertical)
- Secondary equipment
 - Flow meter with PTO (F)
 - Intermittent suction unit (G)
 - Continuous suction unit (H)

The rough-in assembly (A) is generally shipped first and the balance of the unit shipped later.

Figure 1. Gallery Wall



148003_2_001

General Information



WARNING:

Make sure all national and local electrical and medical gas codes are followed during installation, particularly the National Electrical Code®¹ (NEC®²) and National Fire Protection Association (NFPA®³-99). Failure to do so could cause personal injury and equipment damage.

1. Make sure the product has not been damaged in shipment.
2. Refer to your original purchase order to make sure all of the components have been shipped, including parts of the major components.



WARNING:

Read all the installation instructions prior to installing the Gallery Wall. Failure to do so could cause injury to personnel and equipment damage.

3. Read all of the installation instructions prior to installation.
4. Coordinate the installation of the Gallery Wall with the applicable responsible trades persons.
5. Make sure that the person responsible for selecting the artwork that will secure to the picture frame assembly has a copy of this document. See “Installing the Picture Frame Assembly—Horizontal Cover Plate/Slide Mechanism” on page 11 or “Installing the Picture Frame Assembly—Vertical Cover Plate/Slide Mechanism” on page 14 for the specific dimensions and requirements.
6. Look at the architectural drawings to make sure the product is in the correct location, specifically that the left- and right-hand units are installed in the correct locations.
7. Make sure there is enough room to open the artwork, and that opening the artwork will not interfere with other devices on the wall (refer to Product Specification 140648).
8. Make sure the rough-in assembly has been previously installed (refer to Product Specification 140648).

1. National Electrical Code® is a registered trademark of National Fire Protection Association, Inc.

2. NEC® is a registered trademark of National Fire Protection Association, Inc.

3. NFPA® is a registered trademark of National Fire Protection Association, Inc.

Installing the Finished Assembly

NOTE:

The finished assembly should be installed after the rough-in has been installed and the room has been finished with dry wall, painted, and/or wallpapered.

1. Remove the five screws (A) that secure the horizontal cover plate/slide mechanism (B) to the finished assembly (C) (set screws aside) (see figure 2 on page 5).
2. Remove the horizontal cover plate/slide mechanism (B) to expose the gas/electrical compartment (D).
3. Slide the finished assembly (C) into the rough-in assembly (E).
4. Make sure that the finished assembly (C) is firmly seated and that the flanges are flush with the wall.
5. Use a level and T-square to make sure the finished assembly (C) is level and square.
6. Temporarily slide the finished assembly (C) flange slightly away from the wall.
7. Place a bead of caulk under the edge of the flange.
8. Slide the finished assembly (C) completely into the rough-in assembly (E).
9. Use a level and T-square to make sure the finished assembly (C) is level and square.



WARNING:

Wear eye protection. Failure to do so may cause eye injury.

10. Use the punched slots (F) in the side of the finished assembly (C) as a template. With the drill, and an 1/8" bit, drill the locating holes in the rough-in assembly (E) (top and bottom of the left and right sides).
11. Secure the finished assembly (C) to the rough-in assembly (E) with the four 10# x 1" supplied self-tapping screws (G).

Connecting Medical Gas and Electrical Receptacles

1. Select the applicable hose (H) for the medical gas and secure it to the appropriate fitting (I) of the gas kit installed in the rough-in assembly (A). Hand tighten firmly, but do not over tighten the fittings (see figure 2 on page 5).

2. Loop the hose in a single loop. Do not twist it.
3. Repeat these steps for each medical gas.
4. Connect the flexible conduit to the gas/electrical compartment (D) with the applicable electrical fitting.

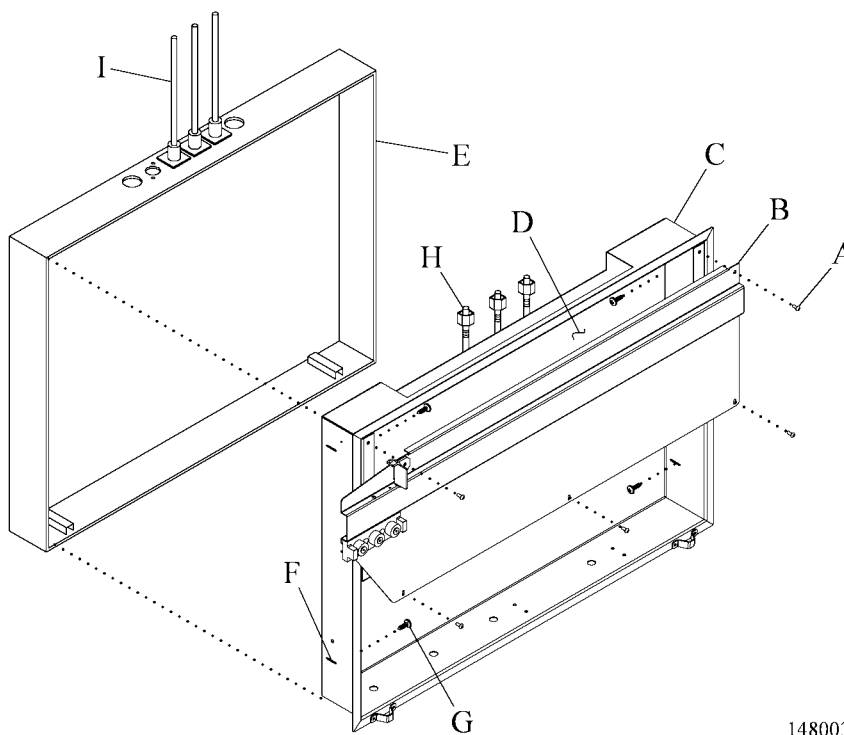


WARNING:

Follow applicable NEC®¹, state, and local codes when making electrical connections. Failure to do so could cause personal injury or equipment damage.

5. Bring the electrical wires to the electrical compartment and make the connections to the electrical receptacles in accordance with NEC®, state, and local codes.

Figure 2. Installing the Finished Assembly



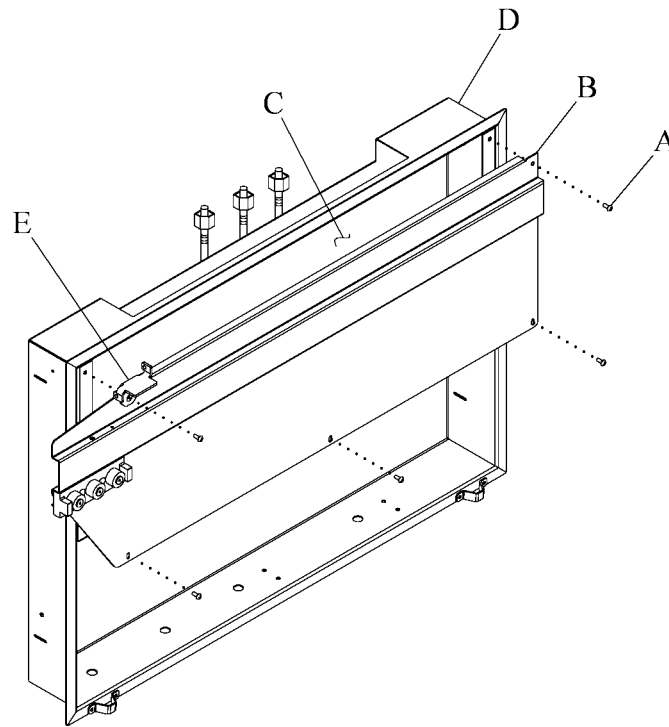
148003_2_006

1. NEC® is a registered trademark of National Fire Protection Association, Inc.

Installing the Horizontal Cover Plate/Slide Mechanism

1. Install the five screws (A) to secure the cover plate/slide mechanism (B) over the gas/electric compartment (C) and onto the finished assembly (D) (see figure 3 on page 6).
2. Put the mechanical stop (E) in the UP (vertical) position.
3. Install the picture frame onto the picture frame assembly. (See “Installing the Picture Frame Assembly—Horizontal Cover Plate/Slide Mechanism” on page 11.)

Figure 3. Installing the Horizontal Cover Plate/Slide Mechanism



148003_2_008

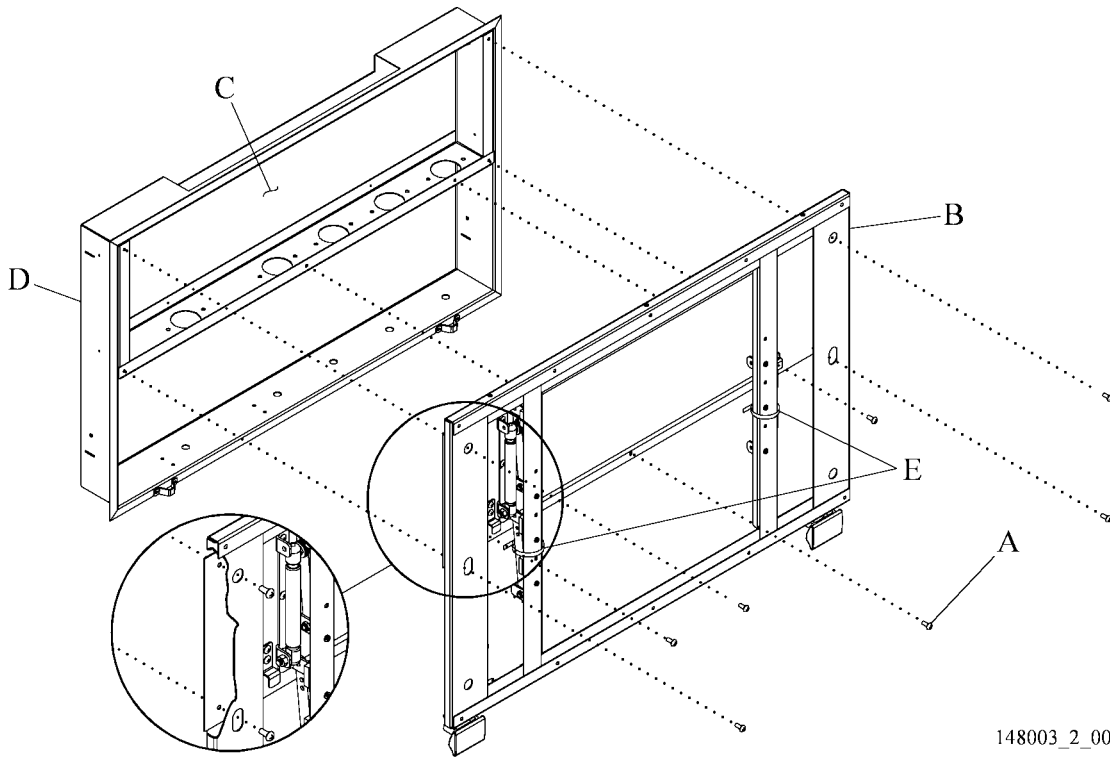
Installing the Vertical Cover Plate/Slide Mechanism

NOTE:

Do not cut the wire ties used to secure the front and back sections of the vertical cover plate/slide mechanism together until instructed to do so.

1. Install the seven screws (A) (make sure to install the **top** screws first) to secure the cover plate/slide mechanism (B) over the gas/electric compartment (C) and onto the finished assembly (D) (see figure 4 on page 7).
2. Cut and remove the wire ties (E).

Figure 4. Installing the Vertical Cover Plate/Slide Mechanism

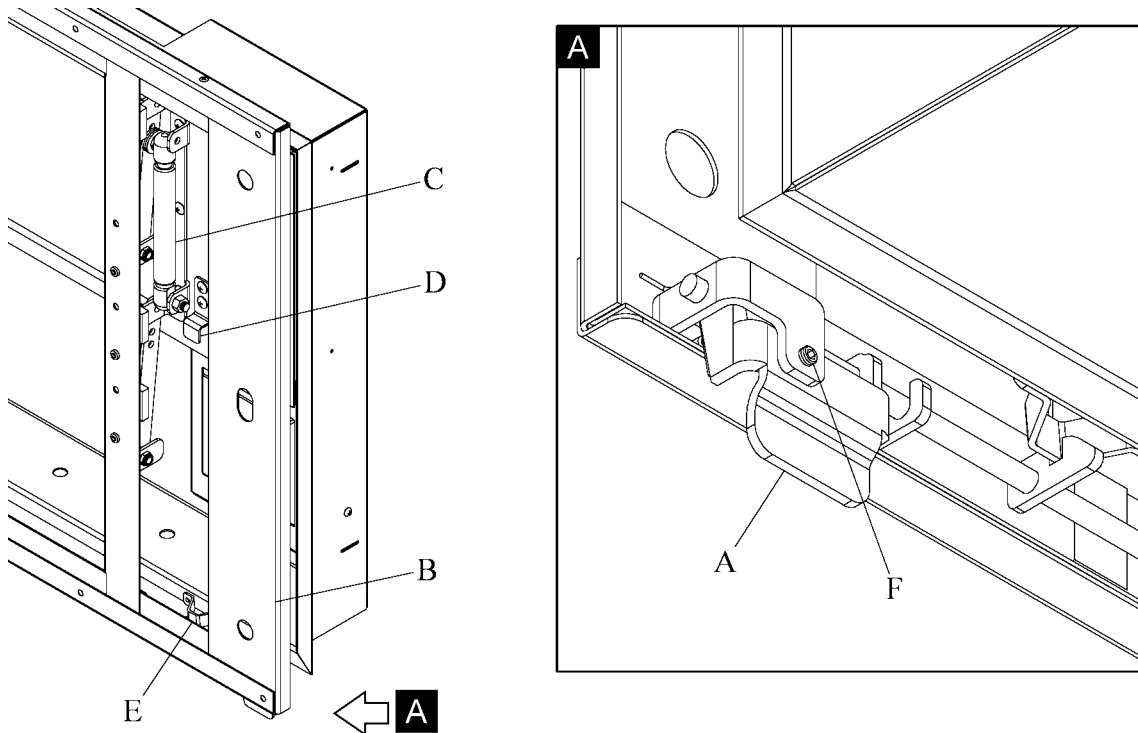


148003_2_005

Vertical Cover Plate/Slide Mechanism Operation

1. Pull the latch (A) to raise and lower the cover plate/slide mechanism (B) to test the gas springs (C). Make sure the cover plate/slide mechanism (B) raises and lowers smoothly and does not bind (see figure 5 on page 8).
2. Raise the cover plate/slide mechanism (B) until it latches into the upper catch brackets (D) in the full up position.
3. If required, adjust the right and left brackets (D) mounting screws to make sure the latch engages securely into the upper catch brackets (D).
4. Lower the cover plate/slide mechanism (B) until it latches into the lower catch bracket (E) in the full down position.
5. If required, adjust the set screw (F) (lower left corner on the back side of the cover plate/slide mechanism (B)) to make sure latch is correctly engaging the lower catch bracket (E).

Figure 5. Vertical Cover Plate/Slide Mechanism Operation



148003_2_007

Installing the Medical Gas Swivel Mechanism

1. Determine the location for each swivel mechanism (A) (see figure 6 on page 10).

**WARNING:**

Make sure that the secondary equipment is connected to the correct medical gas. Failure to do so may cause patient injury or equipment damage.

2. Attach the applicable secondary equipment to the 1/8" National Pipe Thread (NPT) fitting on the medical gas swivel mechanism (A). Hand tighten firmly, but do not over tighten fitting.

**CAUTION:**

Make sure the bottom of the medical gas swivel mechanism is inserted first. Failure to do so may cause damage to the top fitting.

3. Insert the bottom of the medical gas swivel mechanism (A) at an angle into the hole in the bottom of the gas/electric compartment.
4. Hold the upper half of the piston and press down to compress the spring.
5. Keep the spring compressed and slowly bring the medical gas swivel mechanism (A) upright.
6. At vertical, guide the top of the medical gas swivel mechanism (A) into the top fitting (B).
7. Rotate the medical gas swivel mechanism (A) until the tabs correctly align.
8. Move the medical gas swivel mechanism (A) to make sure it is secure.
9. Twist the lower ring (C) to secure the medical gas swivel mechanism (A) to the top fitting (B).
10. Repeat steps 1 through 9 for the other medical gas swivel mechanisms (A).

Removing the Medical Gas Swivel Mechanism



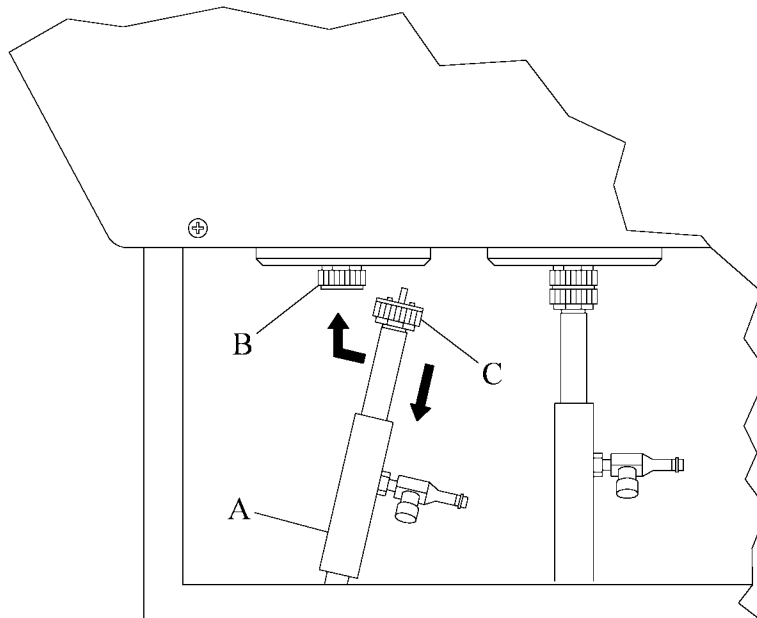
CAUTION:

Do not lift and swing the bottom out first to remove the swivel mechanism. Failure to unlock the top of the swivel mechanism when you remove it may cause damage to the top fitting.

If removal of the medical gas swivel mechanism (A) is necessary, follow these steps (see figure 6 on page 10):

1. Twist the lower ring (C) of the top fitting (B) to unlock it.
2. Pull down on the upper part of the piston to separate it from the top fitting (B).
3. Tilt the top of the medical gas swivel mechanism (A) away from the top fitting (B), then out of the bottom hole.

Figure 6. Installing and Removing the Medical Gas Swivel Mechanism



148003_2_002

Installing the Picture Frame Assembly—Horizontal Cover Plate/Slide Mechanism

The picture frame assembly (A) is an aluminium plate to which the picture frame and picture are attached (see figure 7 on page 13). Selection and installation of the artwork that is to be placed upon the Picture Frame Assembly is beyond the scope of this document.

NOTE:

The artwork picture frame should have these dimensions for the horizontal cover plate/slide mechanism.

- The outside dimension of the frame should be 37" (94 cm) x 24.75" (62.87 cm).
- The frame must be at least 1.0" (2.5 cm) wide on all four sides to secure the picture frame assembly (A) plate.
- Mounting holes are located 1/2" (12.7 mm) from the edge on the perimeter of the picture frame assembly (A).
- Installation of the artwork into the picture frame must be accomplished prior to beginning the installation of the Picture Frame Assembly onto the Horizontal Cover Plate/Slide Mechanism procedure.



WARNING:

Do not use glass to cover artwork in patient rooms. This may cause personal injury.

- If it is necessary to cover the artwork, use 1/8" (3.2 mm) thick acrylic glazing such as Plexiglas®¹.



WARNING:

Total weight for frame and acrylic can not exceed 10 lbs. Equipment damage and personal injury could result.

1. From the back of the picture frame assembly (A), insert the applicable type and length of screw through the pre-drilled holes into the frame of the picture.

NOTE:

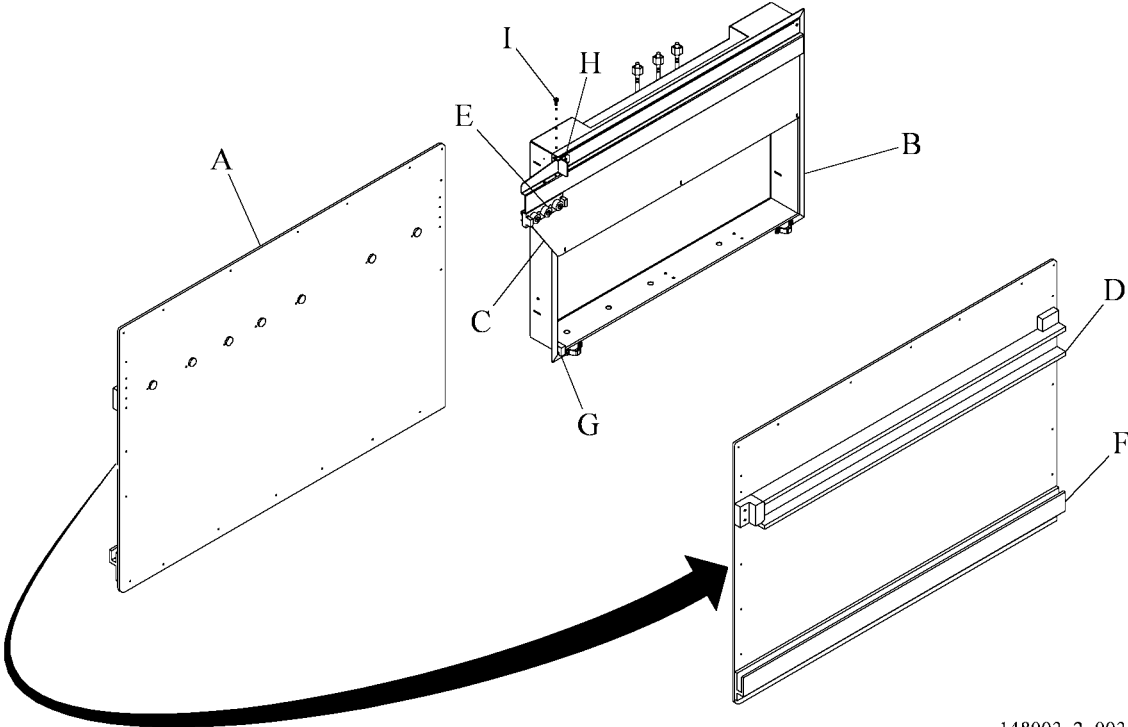
The installation is based on the picture frame assembly moving from right to left when opening the unit. The procedure for installing the picture frame assembly so that it opens from left to right is the same except that the stop locations are reversed.

2. Make sure the finished assembly (B) is installed level and plumb into the wall. If it is not, adjustments may be necessary when mounting the picture frame assembly (A) onto the horizontal cover plate/slide mechanism (C).

1. Plexiglas® is a registered trademark of Arkema.

3. Align the upper groove (D) of the picture frame assembly (A) with the rollers (E) of the horizontal cover plate/slide assembly (C) and slowly slide the picture frame assembly (A) over these rollers (E).
4. Align the lower groove (F) on the back of the picture frame assembly (A) with the plastic guide (G) attached to the lower portion of the finished assembly (B).
5. Remove the lower retaining screw (I) (located on the top surface of the stop bracket (H)) from stop bracket (H).
6. Rotate stop bracket (H) to the UP (vertical) position.
7. Continue to slide the picture frame assembly (A) over the rollers (E) and over the metal indentation until the entire picture frame assembly (A) is attached.
8. If there is any binding or scraping, use the 3/32" (#23) hex head wrench to loosen or tighten the rollers (E) on the cover plate/slide mechanism (C) until the picture frame assembly (A) slides easily and freely.
9. Make sure that the stop bracket (H), is rotated to the DOWN (horizontal) position. mount stop bracket (H) with previously removed screw (I).

**Figure 7. Installing the Picture Frame Assembly
Horizontal Cover Plate/Slide Mechanism**



148003_2_003

Installing the Picture Frame Assembly—Vertical Cover Plate/Slide Mechanism

The Vertical Gallery Wall has two picture frame assembly installation configuration, Exposed Latch and Concealed Latch. The following sections describe the installation instructions for each type of configuration.

Exposed Latch Configuration

The following procedures describe installing the picture frame assembly (A) in the Exposed Latch configuration. In the Exposed Latch configuration, the latch release handle (B) (used to latch and release the vertical cover plate/slide mechanism (C)) is exposed at the bottom edge of the picture frame assembly (A) (see figure 8 on page 15).

The artwork picture frame should have these dimensions for an exposed latch configuration:

- Outside dimension of the frame 37" (94 cm) x 24.75" (62.87 cm).
- Frame must be at least 1.0" (2.5 cm) wide on all four sides.



WARNING:

Do not use glass to cover artwork in patient rooms. This may cause personal injury.

- If it is necessary to cover the artwork, use 1/8" (3.2 mm) thick acrylic glazing such as Plexiglas®¹.



WARNING:

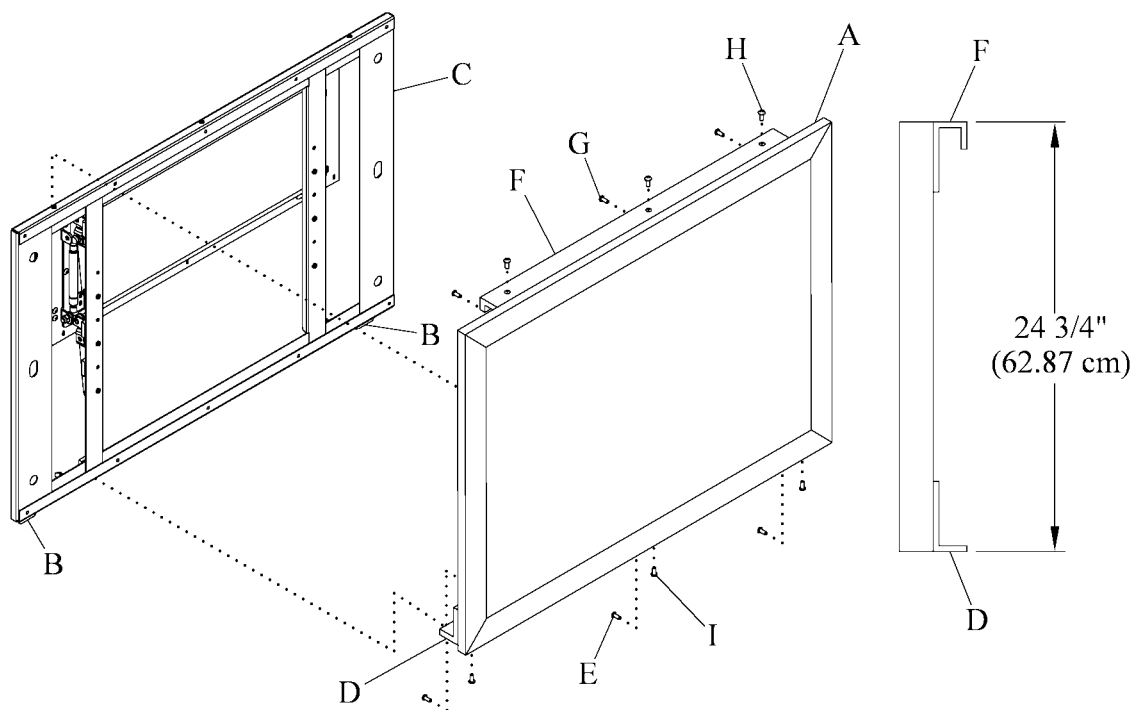
Total weight for frame and acrylic can not exceed 10 lbs. Equipment damage and personal injury could result.

- Artwork should be mounted onto the picture frame prior to installation of the picture frame assembly (A).
 1. Put the lower angle (D) flush with the bottom of the picture frame assembly (A) make sure the lower angle (D) is centered horizontally on the picture frame assembly (A).
 2. Install the three screws (E) to secure the lower angle (D) to the picture frame assembly (A).
 3. Put the upper angle (F) 24.75" (62.87 cm) from the bottom of the lower angle (D). Make sure the upper angle (F) is centered horizontally on the picture frame assembly (A).

1. Plexiglas® is a registered trademark of Arkema.

4. Install the three screws (G) to secure the upper angle (F) to the picture frame assembly (A).
5. Put the upper angle (F) over the top of the vertical cover plate/slide mechanism (C) and pivot the picture frame assembly (A) to align the lower angle (D) with the bottom of the vertical cover plate/slide mechanism (C).
6. Install the three screws (H) to secure the upper angle (F) to the vertical cover plate/slide mechanism (C).
7. Install the three screws (I) to secure the lower angle (D) to the vertical cover plate/slide mechanism (C).

Figure 8. Exposed Latch Configuration



148003_2_009

Concealed Latch Configuration

The following procedures describe installing the vertical picture frame assembly (A) in the Concealed Latch configuration. In the Concealed Latch configuration, the latch release handle (B) (used to latch and release the vertical cover plate/slide mechanism (C)) is hidden behind the bottom edge of the picture frame assembly (A) (see figure 9 on page 17).

The artwork picture frame should have these dimensions for the concealed latch configuration:

- Outside dimension of the frame 38" (96.5 cm) x 26.5" (67.3 cm).
- Frame must be at least 2.5" (6.4 cm) wide on all four sides



WARNING:

Do not use glass to cover artwork in patient rooms. This may cause personal injury.

- If it is necessary to cover the artwork, use 1/8" (3.2 mm) thick acrylic glazing such as Plexiglas®¹.



WARNING:

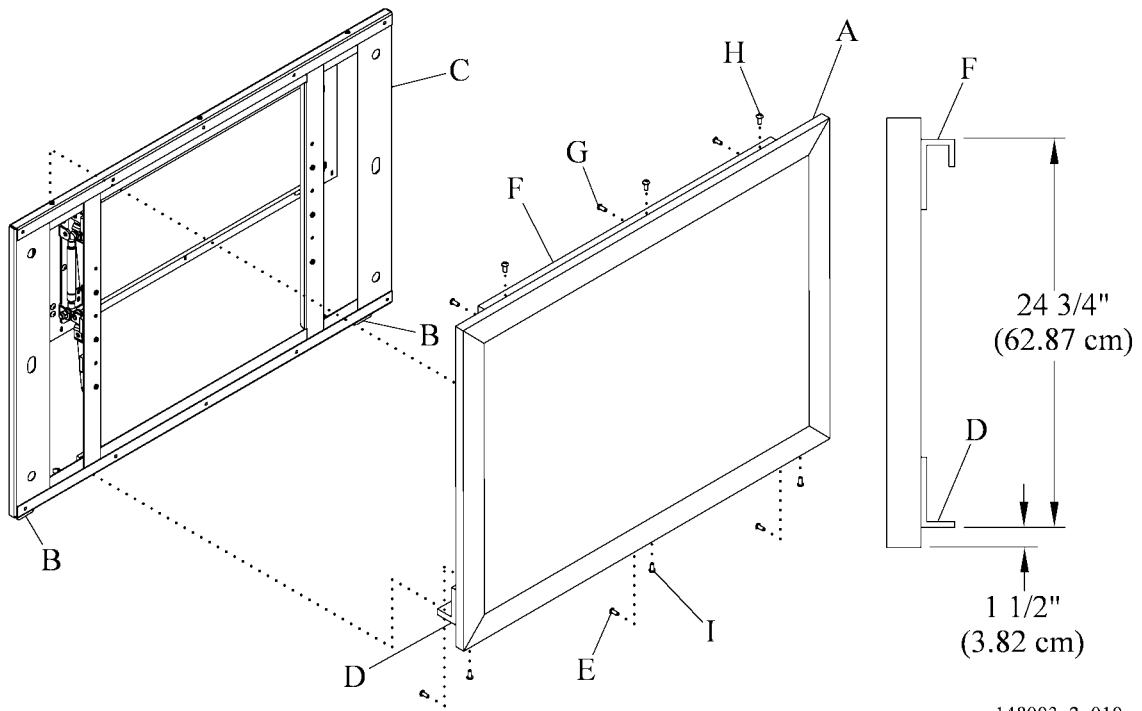
Total weight for frame and acrylic can not exceed 10 lbs. Equipment damage and personal injury could result.

- Artwork should be mounted onto the picture frame prior to installation of the picture frame assembly (A).
 1. Put the lower angle (D) 1.5" (3.8 cm) from the bottom of the picture frame assembly (A) make sure lower angle (D) is centered horizontally on the picture frame assembly (A).
 2. Install the three screws (E) to secure the lower angle (D) to the picture frame assembly (A).
 3. Put the upper angle (F) 24.75" (62.87 cm) from the bottom of the lower angle (D). Make sure the upper angle (F) is centered horizontally on the picture frame assembly (A).
 4. Install the three screws (G) to secure the upper angle (F) to the picture frame assembly (A).
 5. Put the upper angle (F) over the top of the vertical cover plate/slide mechanism (C) and pivot the picture frame assembly (A) to align the lower angle (D) with the bottom of the vertical cover plate/slide mechanism (C).

1. Plexiglas® is a registered trademark of Arkema.

6. Install the three screws (H) to secure the upper angle (F) to the vertical cover plate/slide mechanism (C).
7. Install the three screws (I) to secure the lower angle (D) to the vertical cover plate/slide mechanism (C).

Figure 9. Concealed Latch Configuration



148003_2_010



NOTES:
