

**Hill-Rom®**

## NP100 Prevention Surface



### Prevention, safety and quality with the latest in wound surface technology

The NP100 prevention surface offers superior, yet affordable pressure redistribution. Designed by engineers and clinicians, this surface is comprised of high-density, multi-layered, multi-zoned foam with a shear liner and durable, soft, bi-stretch ticking to help protect the skin and enhance patient comfort. The surface has RF welded seams to prevent fluid penetration and is easy-to-clean, stain-resistant and durable. Additionally, the NP100 prevention surface is available with nano Ag+™ technology: a safe, cost effective and long lasting method for protecting surfaces from stain and odor-causing bacteria, mold and mildew.\*

#### At a glance

- Multi-zoned foam prevention surface allows for improved pressure redistribution points by area
- Shear liner addresses shear and patient comfort
- RF welded seams help to prevent fluid ingress
- Bi-directional stretch ticking reduces friction and noise
- Side handles for easy handling
- EPA-registered anti-microbial agent in foam to provide additional protection from odor causing bacteria
- Zippered ticking provides easy access to mattress components
- Fire barrier included
- Available with nano Ag+™ technology that protects the surface against stain and odor-causing bacteria\*
- Accommodates weight up to 350 lbs standard; 500 lbs on VersaCare® bed and Bariatric versions

nano Ag+  
Smart Surface Technology

\* This product is not intended to protect users or others against bacteria, viruses, or other disease organisms. Always disinfect Hill-Rom® surfaces thoroughly after each use, according to facility protocol.

**Hill-Rom®**

Enhancing Outcomes for Patients and Their Caregivers.™

# Hill-Rom®

## NP100 Prevention Surface



### Hill-Rom® NP100 Prevention Surface Specifications – Flat Deck, CareAssist® Mattress

#### Multi-zoned and multi-layered foam construction

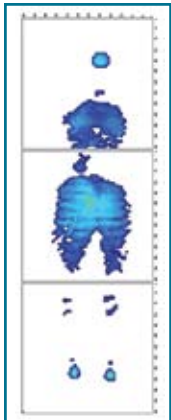
|                           |   |
|---------------------------|---|
| Head and upper body ..... | Soft support, 17 ILD                            |
| Seat/middle .....         | Soft support, 23 ILD                            |
| Heels .....               | Very soft support, 11 ILD with deep cut pattern |
| Firm support base .....   | Density 1.9 PCF                                 |
| Length .....              | 76", 80" and 84" (Flat Deck); 80" (CareAssist)  |
| Width .....               | 32", 35", 35.5", and 38.5" +/- .5"              |
| Height .....              | 6"  |
| Weight .....              | Approx. 21 lbs                                  |
| Weight limit .....        | 350 lbs   |
| Flammability .....        | Cal129, CPSC 16CFR1633, Boston IX-11            |
| Warranty .....            | 5 years   |
| MVP .....                 | 300 gm/sqm/24 hrs.                              |

### Hill-Rom® NP100 Prevention Surface Specifications – VersaCare® Mattress

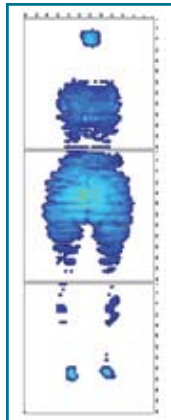
#### Multi-zoned and multi-layered foam construction

|                           |   |
|---------------------------|---|
| Head and upper body ..... | Soft support, 20 ILD                                  |
| Seat/middle .....         | Soft support, 20 ILD                                  |
| Heels .....               | Very soft support, 11 and 8 ILD with deep cut pattern |
| Firm support base .....   | Density 1.9 PCF                                       |
| Length .....              | 84"   |
| Width .....               | 35" +/- .5"   |
| Height .....              | 7"  |
| Weight .....              | Approx. 21 lbs  |
| Weight limit .....        | 500 lbs   |
| Flammability .....        | Cal129, CPSC 16CFR1633, Boston IX-11                  |
| Warranty .....            | 5 years   |
| MVP .....                 | 300 gm/sqm/24 hrs.                                    |

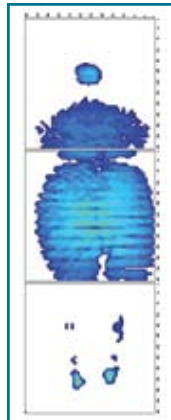
## NP100 standard flat deck surface



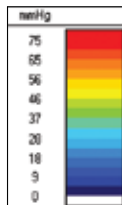
Head of Bed 30°  
115 lb female



Head of Bed 30°  
150 lb female



Head of Bed 30°  
300 lb female



Representative sample for supine patient at weight indicated. Pressure results will vary depending on patient weight and position. Always use in conjunction with facility protocols for patient repositioning and pressure ulcer prevention.

Hill-Rom reserves the right to make changes without notice in design, specifications and models. The only warranty Hill-Rom makes is the express written warranty extended on the sale or rental of its products.

© 2008 Hill-Rom Services, Inc. ALL RIGHTS RESERVED.

154881 rev 1 9/25/08



Enhancing Outcomes for Patients and Their Caregivers.™

USA 800-445-3730  
Canada 800-267-2337

[www.hill-rom.com](http://www.hill-rom.com)