



The AccuMax Quantum™ VPC is designed with Controlled Release™ technology to provide a much improved surface for the prevention and management of skin breakdown.

The AccuMax Quantum™ VPC provides clinically proven, non-powered pressure redistribution and therapeutic support over anatomically inspired zones through the use of interconnected pressure redistribution air sectors. The Controlled Release™ valve system allows for “communication” among these air sectors, thus providing a custom low pressure profile for any patient size or weight.

A top layer of visco-elastic foam helps to create a custom body conforming surface that increases patient envelopment and comfort, helping to lower interface pressures.

At a glance

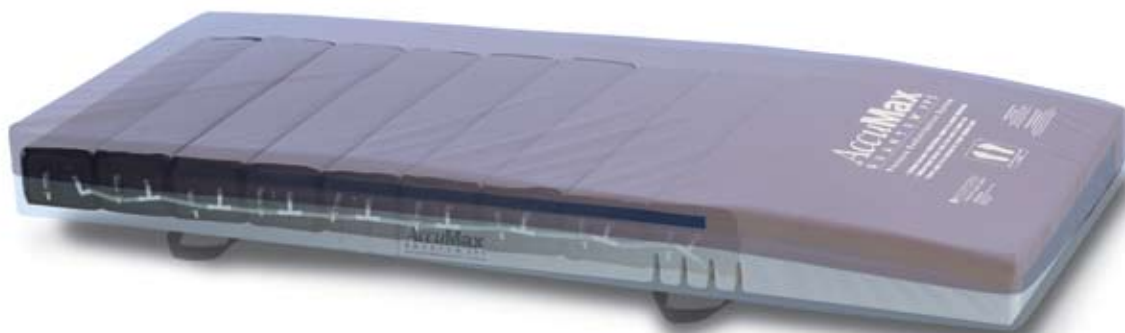
- Pressure redistribution mattress
- Designed for moderate risk patients to prevent and treat pressure ulcers
- Proven clinical outcomes on Stage III and IV pressure ulcer patients*
- Premium visco-elastic foam topper
- No interruption of pressure redistribution therapy in the event of an electrical power failure
- Horizontally oriented, nylon covered air sectors
- Open air system
- Non-powered Controlled Release™ technology
- Anatomically inspired pressure redistribution zones
- Accommodates weight up to 500 lbs
- Heavy duty bottom cover
- Firm perimeter

* Based on results from manufacturer testing.

Hill-Rom®

AccuMax Quantum™ VPC

Dynamic, pressure redistribution systems that provide therapy without a power source.



Through a series of air sectors along with innovative Controlled Release™ technology intake and output valves, the system automatically begins to create a custom pressure relieving profile immediately after a patient is placed upon the system.

Upon ingress, a natural chain of events begins in each of its alternately connected air sectors.

First, the pressure level changes in each affected sector. Second, the air inside each sector is then displaced. When the pressure inside a sector reaches a higher than clinically effective internal level, an output valve releases air to achieve a therapeutic, low pressure balance.

The result is a support surface that achieves incredibly low interface pressure without the need for pumps and blowers.

The surface has the ability to reconfigure and reinflate itself at any time the patient moves or is repositioned. Whenever the pressure gradient changes, the intake and output valves automatically adjust the sectors to again achieve a low-pressure balance providing vital therapy for your high-risk patient.

The unique Controlled Release™ valve system allows for pressure changes to occur very slowly.



The AccuMax Quantum™ VPC/IS systems are specifically constructed to accommodate the VersaCare® frame.

- Precision die-cut construction of the heel section accommodates the retractability of the VersaCare® bed frame
- Unique pan design in heel section allows for wider pressure relief area
- Seven horizontally oriented air sectors and four anatomically inspired pressure relief zones



The AccuMax Quantum™ VPC/TC systems offer caregivers a clinically proven pressure redistribution support surface that is designed to accommodate the TotalCare® bed frame.

- Articulates to FullChair® position
- Unique, contour-shaped design in the foot section allows the mattress to extend or retract with the bed frame
- Seven horizontally oriented air sectors and four anatomically inspired pressure relief zones



The AccuMax Quantum™ VPC/AD systems are specifically constructed to accommodate the CareAssist® ES bed frame.

- Beveled side edges and modified head and foot ends to accommodate the CareAssist® ES bed frame
- Patented Heel Pillow™ with heel gradient
- Nine horizontally oriented air sectors and six anatomically inspired pressure relief zones



AccuMax Quantum™ VPC systems are designed to fit a variety of standard flat deck frames.

Hill-Rom®

AccuMax Quantum™ VPC



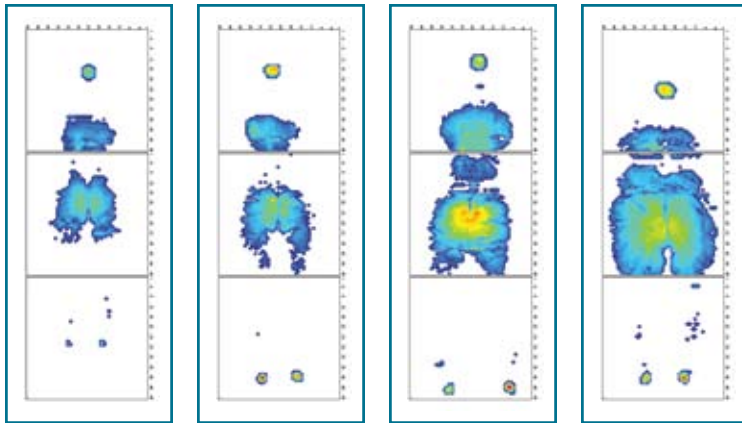
Hill-Rom® AccuMax Quantum™ VPC /IS, VPC/TC surface specifications – VersaCare® and TotalCare® mattresses

Topper	15 ILD and density 3.5 lbs VE
Body sections zones (1-6)	Multi-layered with varying ILDs and densities ranging from 12 ILD to 42 ILD and densities from 1.65 to 1.85
Calf and heel zones (2 layers)	31 ILD with gentle slope, 1.85 density, 3.5 lbs VE
Firm support base	Density 1.9 PCF
Length	84" (VPC/TC), 86" (VPC/IS)
Width	35"
Height	7.5"
Weight	Approx. 31-34 lbs
Weight limit	500 lbs
Flammability	Cal 117, 121,129, and 603, CPSC 16CFR1633, 16CFR16332
Warranty	5 years limited, 3 years non-prorated
MVP72 gm/sqm/hr

Hill-Rom® AccuMax Quantum™ VPC, VPC/AD surface specifications – Flat deck and CareAssist® mattresses

Topper	15 ILD and density 3.5 lbs VE
Body sections zones (1-6)	Multi-layered with varying ILDs and densities ranging from 12 ILD to 42 ILD and densities from 1.65 to 1.85
Calf and heel zones (2 layers)	31 ILD with gentle slope, 1.85 density, 3.5 lbs VE
Firm support base	Density 1.9 PCF
Length	75", 80", 84"
Width	32", 35"
Height	7"
Weight	Approx. 29 lbs
Weight limit	500 lbs
Flammability	Cal 117, 121,129, and 603, CPSC 16CFR1633, 16CFR16332
Warranty	5 years limited, 3 years non-prorated
MVP72 gm/sqm/hr

AccuMax Quantum™ VPC standard flat deck surface

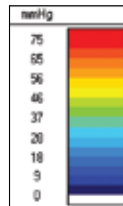


Head of Bed 30°
130 lb female

Head of Bed 30°
154 lb female

Head of Bed 30°
240 lb male

Head of Bed 30°
288 lb female



Representative sample for supine patient at weight indicated. Pressure results will vary depending on patient weight and position. Always use in conjunction with facility protocols for patient repositioning and pressure ulcer prevention.

AccuMax Quantum and Controlled Release are trademarks of Encompass Group, Inc.

Hill-Rom reserves the right to make changes without notice in design, specifications and models. The only warranty Hill-Rom makes is the express written warranty extended on the sale or rental of its products.

© 2008 Hill-Rom Services, Inc. ALL RIGHTS RESERVED.

154872 rev 1 9/26/08



Enhancing Outcomes for Patients and Their Caregivers.™

USA 800-445-3730
Canada 800-267-2337

www.hill-rom.com