

**Subject: Integris® 201606 Stand-Alone Bed Locator Installation
Instructions**

Tools required:	Standard drill	1/4" diameter drill bit
	5/8" diameter drill bit	15/16" drill bit
	Phillips head screwdriver	Screwdriver
	5/16" hex nut driver	Tape measure
	4' (122 cm) level	Power screwdriver
	As-built drawings	Stud finder
	Safety glasses	Broom
	Dustpan	Pencil
	Level	
Parts required:	(1) 129253	Cover, picture frame—P201606
	(1) 129255S	Access panel assembly, 201606/07
	(1) 129360	Back plate assembly, 201606/07
	(1) 131617	Installation guide bracket
	(1) 205179	Bag assembly, Bed Locator
	(4) 50590	Screw, #6-20, oval, cross head, recessed
	(2) 3679	Screw, #8 x 5/8", pan head (for units installed on the ImageBuilders™¹ Cabinet Headwall Collection only)
	(1) P788-00	Raceway interconnect from Bed Locator (for units installed with the Integris®² 2001B/2002B Headwall System only)
	(1) P2018\$\$\$	Flatwall Headwall System interconnect (for units installed with the Flatwall Headwall System only)

1. ImageBuilders™ is a trademark of Hill-Rom Services, Inc.
2. Integris® is a registered trademark of Hill-Rom Services, Inc.

205179, Bag assembly, Bed Locator, includes these items:

(8)	5312502	Screw, #8-18 x 3/8", phillips, truss head
(6)	16114	Screw, #6-32 x 1/2", phillips, flat head, zinc-plated
(3)	21045	Screw, 3/8"-16 x 3", slotted, round head, zinc-plated, full thread
(3)	21046	Toggle wing, 3/8"-16
(6)	29591	Screw, #8, self-drilling
(2)	34084	Lockwasher, external tooth
(1)	5294502	Screw, #6 x 3/8", type B, truss head
(9)	5314301	Screw, #12—self-drilling, hex head
(3)	29325PL	Stud guide—plated
(6)	55408	Grommet edging, 2"
(6)	55409	Grommet edging, 3"
(3)	55691PL	Face ring, wall box

P788-00, Raceway interconnect from Bed Locator, includes these items:

(1)	55217	Bag assembly, interconnect
(1)	55152	Cover, raceway
(1)	5510939	Backplate, raceway

P2018, Flatwall Headwall System interconnect, includes these items:

(1)	55217	Bag assembly, interconnect
(1)	59394	Raceway cover, Flatwall Headwall System interconnect
(1)	5939339	Backplate, Flatwall Headwall System interconnect

55217, Bag assembly, interconnect, includes these items:

(1)	12483	Lockwasher, #8, dish-type
(1)	15359	Washer, 16 gauge, unplated
(1)	15384	Toggle snap, 3/16", zinc-plated
(1)	50167	Screw, #10-24 x 3", round/cross head
(5)	5294502	Screw, #6 x 3/8", type B, truss head

§§§ Specify paint color.

Introduction

These instructions are for the installation of the Integris® 201606 Stand-Alone Bed Locator on standard, fire-rated, or seismic-rated dry wall and with these products:

- Integris® 2001B/2002B Headwall System with vertical chase assembly
- Flatwall Headwall System (P670E)
- ImageBuilders™ Cabinet Headwall Collection (P796)

The bed locator must be installed according to all applicable state and local codes, and these:

- National Fire Protection Association (NFPA) 70, *National Electrical Code*®¹ (NEC®²)
- Canadian Standards Association (CSA) 22.1, *Canadian Electrical Code*
- CSA Z318.7, *Commissioning of Communication Systems in Health Care Facilities*

Set-up

1. Before you start the installation, refer to the as-built drawings to determine the correct location for the bed locator.
2. Make sure the facility's power has been run to the installation site and the wall boxes, where applicable, have been installed in the wall or center cabinet of the ImageBuilders™ Cabinet Headwall Collection.
3. Unpack the contents of the shipping container.
4. Read all of these installation instructions, and make sure the instructions match your hardware and as-built drawings.



SHOCK HAZARD:

Failure to turn off all power sources to the installation site during the installation could cause personal injury or equipment damage.

5. Turn off all power to the installation site.

NOTE:

The installation site is likely to have more than one grounded or isolated power source: normal power and emergency power.

1. National Electrical Code® is a registered trademark of National Fire Protection Association, Inc.
2. NEC® is a registered trademark of National Fire Protection Association, Inc.

Determine the Wall and Construction Type



WARNING:

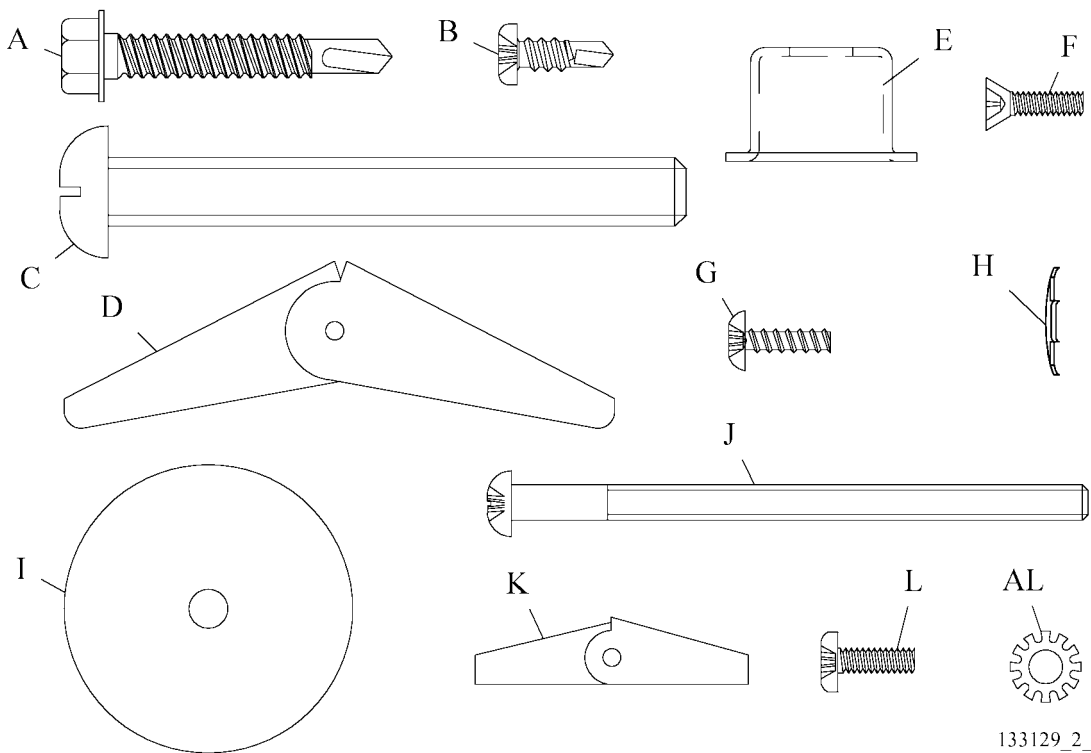
The installation method differs for each wall and construction type. Failure to install the bed locator according to the applicable wall and construction type could cause the bed locator to collapse. Personal injury or equipment damage could occur.

1. Refer to the local or state building codes, and determine the wall type and construction type:
 - **Seismic** walls are constructed to prevent damage from an earthquake.
 - **Non-seismic** walls are **not** constructed to prevent damage from an earthquake.
 - **Fire-rated** walls are constructed to prevent the spread of fire.
 - **Non-fire-rated** walls are **not** constructed to prevent the spread of fire.
2. Do **one** of these:
 - For **seismic** walls, install wall backing plates according to the Office of Statewide Health, Planning, and Development (OSHPD)-approved drawings and the as-built drawings, and then go to “Hardware Requirements” on page 5.
 - For **fire-rated, non-seismic** walls, go to “Hardware Requirements” on page 5.
 - For **non-fire-rated, non-seismic** walls, make sure the walls are constructed with at least 20-gauge steel studs on 16" (41 cm) centers and covered with a minimum of 5/8" (16 mm) dry wall, and then go to “Hardware Requirements” on page 5.
 - To install the bed locator with a Flatwall Headwall System or Integris® 2001B/2002B Headwall System with a vertical chase assembly, go to “Hardware Requirements” on page 5.
 - To install the bed locator on the ImageBuilders™ Cabinet Headwall Collection, go to “Hardware Requirements” on page 5.

Hardware Requirements

1. Remove the necessary hardware from the bag assembly (see figure 1 on page 5):
 - For **non-seismic** dry wall hardware, refer to table 1 on page 6.
 - For **seismic-rated** or **fire-rated** dry wall hardware, refer to table 2 on page 6.
 - For the **Integris® 2001B/2002B Headwall System** or **Flatwall Headwall System** hardware, refer to table 3 on page 6.
 - For the **ImageBuilders™ Cabinet Headwall Collection** hardware, refer to table 4 on page 7.

Figure 1. Hardware



133129_2_008

Table 1. Non-Seismic-Rated Dry Wall Hardware

Item	Part Number	Description
A	5314301	Screw, #12—self-drilling, hex head
B	29591	Screw, #8, self-drilling
C	21045	Screw, 3/8"-16 x 3", slotted, round head, zinc-plated, full thread
D	21046	Toggle wing, 3/8"-16
E	29325PL	Stud guide—plated
F	16114	Screw, #6-32 x 1/2", phillips, flat head, zinc-plated

Table 2. Seismic-Rated and Fire-Rated Dry Wall Hardware

Item	Part Number	Description
A	5314301	Screw, #12—self-drilling, hex head
B	29591	Screw, #8, self-drilling
F	16114	Screw, #6-32 x 1/2", phillips, flat head, zinc-plated

Table 3. Headwall System Dry Wall Hardware

Item	Part Number	Description
A	5314301	Screw, #12—self-drilling, hex head
B	29591	Screw, #8, self-drilling
C	21045	Screw, 3/8"-16 x 3", slotted, round head, zinc-plated, full thread
D	21046	Toggle wing, 3/8"-16
E	29325PL	Stud guide—plated
F	16114	Screw, #6-32 x 1/2", phillips, flat head, zinc-plated
G	5294502	Screw, #6 x 3/8", type B, truss head
H	12483	Lockwasher, #8, dish-type
I	15359	Washer, 16 gauge, unplated
J	50167	Screw, #10-24 x 3", round/cross head
K	15384	Toggle snap, 3/16", zinc-plated

Table 4. ImageBuilders™ Cabinet Headwall Collection

Item	Part Number	Description
C	21045	Screw, 3/8"-16 x 3", slotted, round head, zinc-plated, full thread
D	21046	Toggle wing, 3/8"-16
E	29325PL	Stud guide—plated
F	16114	Screw, #6-32 x 1/2", phillips, flat head, zinc-plated
L	3679	Screw, #8 x 5/8", pan head

2. If installing the bed locator with an **Integris® 2001B/2002B Headwall System** or **Flatwall Headwall System** or on an **ImageBuilders™ Cabinet Headwall Collection**, get the hardware from the interconnect module (P788-00/P2018).

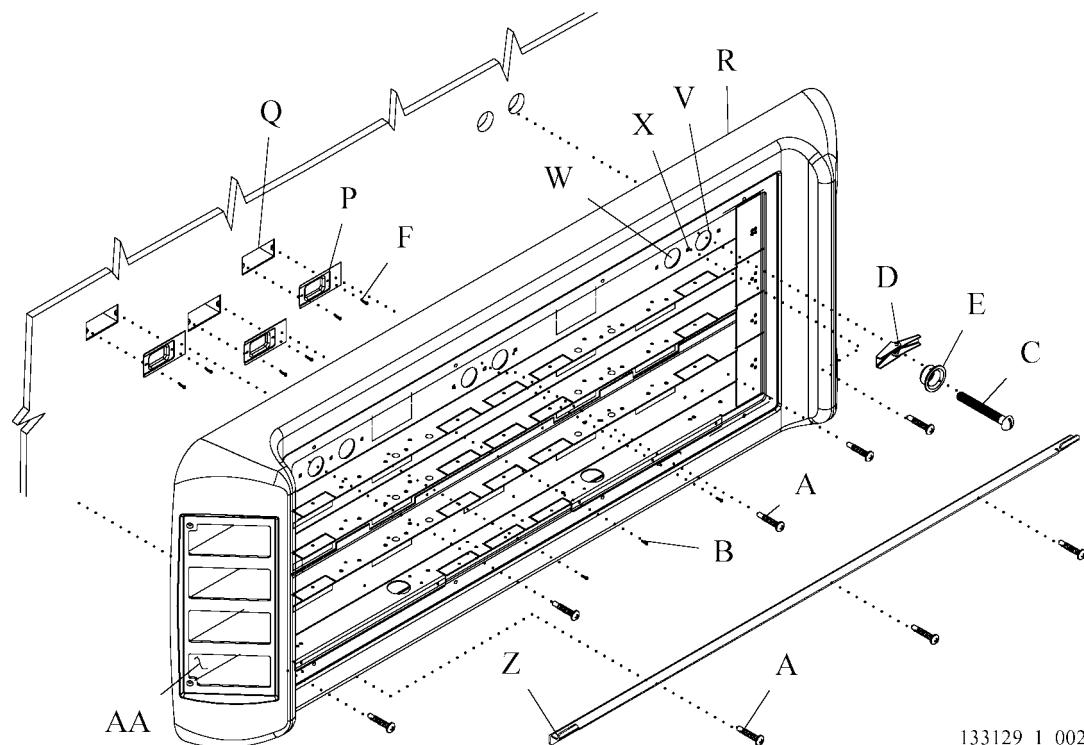
Which Instructions to Use

1. Do **one** of these:
 - If installing the bed locator on a wall **without** a headwall system, go to “Install the Bed Locator without a Headwall System or ImageBuilders™ Cabinet Headwall Collection” on page 8.
 - If installing the bed locator **with** the **Integris® 2001B/2002B Headwall System** or **Flatwall Headwall System**, go to “Install the Bed Locator with the Integris® 2001B/2002B Headwall System or Flatwall Headwall System” on page 14.
 - If installing the bed locator on the **ImageBuilders™ Cabinet Headwall Collection**, go to “Install the Bed Locator on the ImageBuilders™ Cabinet Headwall Collection” on page 20.

Install the Bed Locator *without* a Headwall System or ImageBuilders™ Cabinet Headwall Collection

1. Install the flat head screws (F) to attach the face rings (P) on the line voltage and low voltage wall boxes (Q) (see figure 2 on page 8).

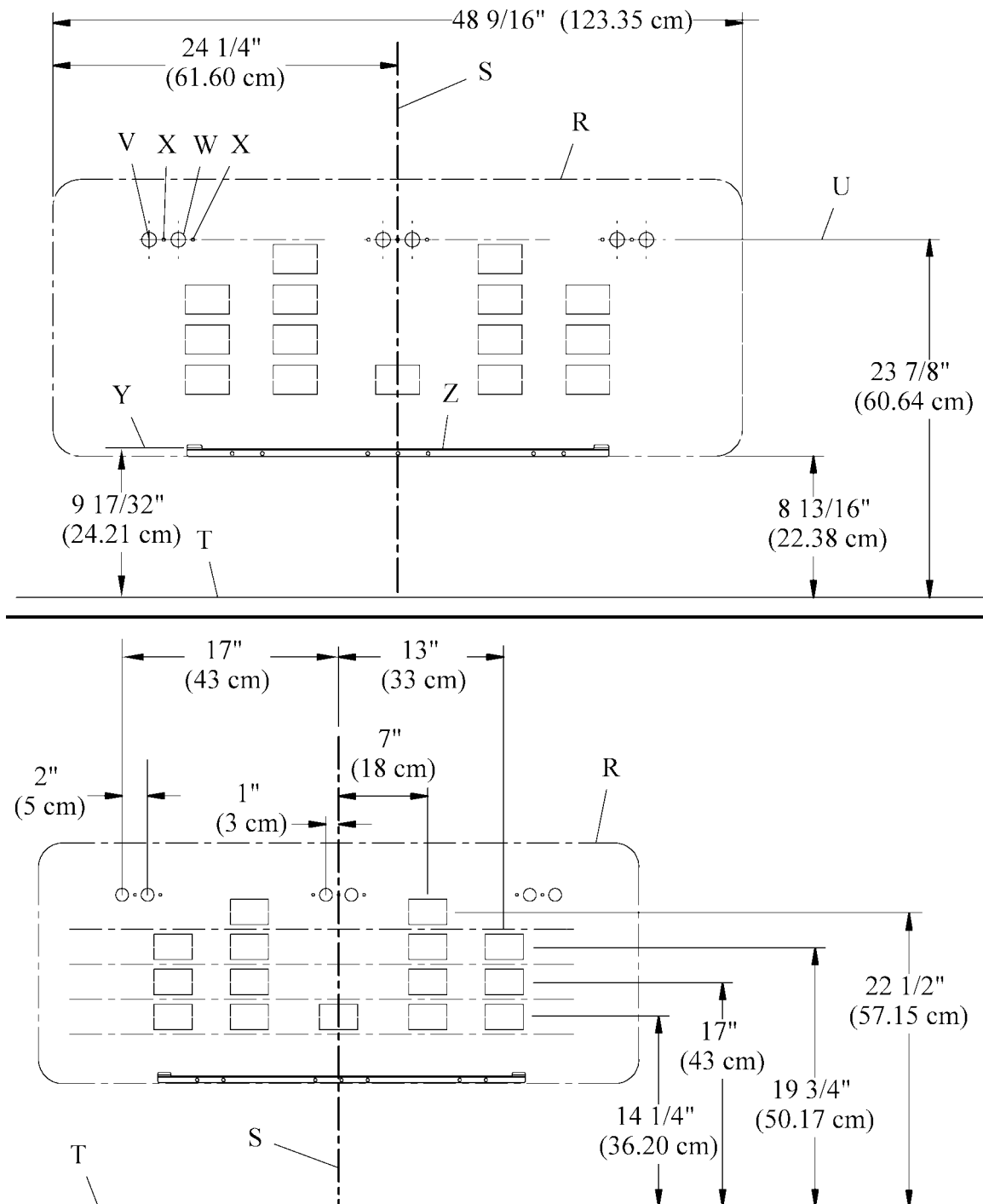
Figure 2. Back Plate Assembly and Installation Guide Bracket



133129_1_002

2. Remove the knockouts from the back plate assembly (R) that align with the wall boxes (Q).
3. Install the grommet edging around each removed knockout.
4. Make a mark to show the bed centerline (S) (see figure 3 on page 9):
 - a. Refer to the as-built drawings, and determine the bed centerline (S) as it relates to the back plate assembly (R).
 - b. If a finished floor has **not** been installed, make a mark to show the location of the intended finished floor line (T).
 - c. Use a 4' (122 cm) level and pencil to make a plumb vertical bed centerline (S) on the wall 25" (64 cm) up from the floor line (T).

Figure 3. Typical Installation Dimensions



133129_1_003

5. Measure 23 7/8" (60.64 cm) from the floor line (T) up the wall, and make a mark to show the location on the bed centerline (S).
6. Use a 4' (122 cm) level and pencil to make a plumb line at least 20" (51 cm) on both sides of the mark to show the horizontal centerline (U) of the mounting holes (V), (W), and (X).
7. Measure 9 17/32" (24.21 cm) from the floor line (T) up the wall, and make a mark to show its location on the bed centerline (S).
8. Use a 4' (122 cm) level and pencil to make a plumb line at least 20" (51 cm) on both sides of the mark to show the top horizontal centerline (Y) of the installation guide bracket (Z).
9. Align the installation guide bracket (Z) with the centerlines (S) and (Y).



WARNING:

Wear eye protection. Failure to do so could result in eye injury.

10. Put on safety glasses.
11. Use a standard drill with a 5/16" hex nut driver to install three #12 self-drilling screws (A) at a location free from obstruction to attach the installation guide bracket (Z) to the wall (see figure 2 on page 8).



WARNING:

The installation method differs for each wall and construction type. Failure to install the bed locator according to the applicable wall and construction type could cause the bed locator to collapse. Personal injury or equipment damage could occur.

12. Do **one** of these:
 - For **non-fire-rated** dry wall, go to “Non-Fire-Rated Dry Wall Installation” on page 11.
 - For **fire-rated** dry wall, go to “Fire-Rated Dry Wall Installation” on page 13.

Non-Fire-Rated Dry Wall Installation



WARNING:

Do not leave the back plate assembly unattended in the installation guide bracket and not attached to the wall. The back plate assembly could fall, resulting in personal injury or equipment damage.

1. Put the back plate assembly (R) in the installation guide bracket (Z) (see figure 2 on page 8).
2. Align the back plate assembly (R) with the centerlines (S) and (U) (see figure 3 on page 9).
3. Use the bed centerline (S) as a reference, and make marks to show all six primary mounting holes (V) and secondary mounting holes (W) for the back plate assembly (R).
4. Remove the back plate assembly (R) from the installation guide bracket (Z).



WARNING:

Wear eye protection. Failure to do so could result in eye injury.

5. Put on safety glasses.
6. At each primary mounting hole (V), remove the knockout, and drill a 15/16" diameter hole. If an obstruction or wall stud is there, drill at the secondary mounting hole (W).
7. Clean up any debris from drilling.
8. Put the back plate assembly (R) in the installation guide bracket (Z) (see figure 2 on page 8).



WARNING:

The installation method differs for each wall and construction type. Failure to install the bed locator according to the applicable wall and construction type could cause the bed locator to collapse. Personal injury or equipment damage could occur.

9. On **seismic-rated** dry wall, do as follows:
 - a. Use a standard drill with a 5/16" hex nut driver to install #12 self-drilling screws (A) through the mounting holes (X) at a location free from obstruction to attach the back plate assembly (R) to the wall (see figure 2 on page 8).
 - b. Go to step 11.

10. On **non-seismic-rated** and **non-fire-rated** dry wall, do as follows:
 - a. Assemble the round head screws (C), stud guides (E), and toggle wings (D). Leave enough room for the toggle wings (D) to fully expand when installed (see figure 2 on page 8).
 - b. At the mounting holes (V) and/or (W), remove the knockout. Then install the round head screws (C), stud guides (E), and toggle wings (D) to attach the back plate assembly (R) to the wall.



WARNING:

The toggle wings must fully expand inside the wall. If the toggle wings do **not** fully expand, the bed locator could collapse. Personal injury or equipment damage could occur.

- c. Make sure the toggle wings (D) fully expand inside the wall.
 - d. Tighten the round head screws (C).
11. Find the wall studs that are furthest from the sides of the bed centerline (S) and still within the area of the back plate assembly (R) (see figure 3 on page 9).
12. At the wall studs, drill two 1/4" diameter holes in the lowest raceway (AA) of the back plate assembly (R) (see figure 2 on page 8).



WARNING:

Make sure the self-drilling screws go through the wall stud or backing plate. Failure to do so could result in personal injury or equipment damage.

13. Use a standard drill with a 5/16" hex nut driver to install two #12 self-drilling screws (A) at a location free from obstruction to attach the lowest raceway (AA) to the wall studs or backing plate.
14. Install the #8 self-drilling screws (B) to attach the back plate assembly (R) to the face rings (P).
15. Go to "Final Steps" on page 23.

Fire-Rated Dry Wall Installation



WARNING:

Do not leave the back plate assembly unattended in the installation guide bracket and not attached to the wall. The back plate assembly could fall, resulting in personal injury or equipment damage.

1. Put the back plate assembly (R) in the installation guide bracket (Z) (see figure 2 on page 8).
2. Align the back plate assembly (R) with the centerlines (S) and (U) (see figure 3 on page 9) and wall boxes (Q) (see figure 2 on page 8).



WARNING:

Wear eye protection. Failure to do so could result in eye injury.

3. Put on safety glasses.



WARNING:

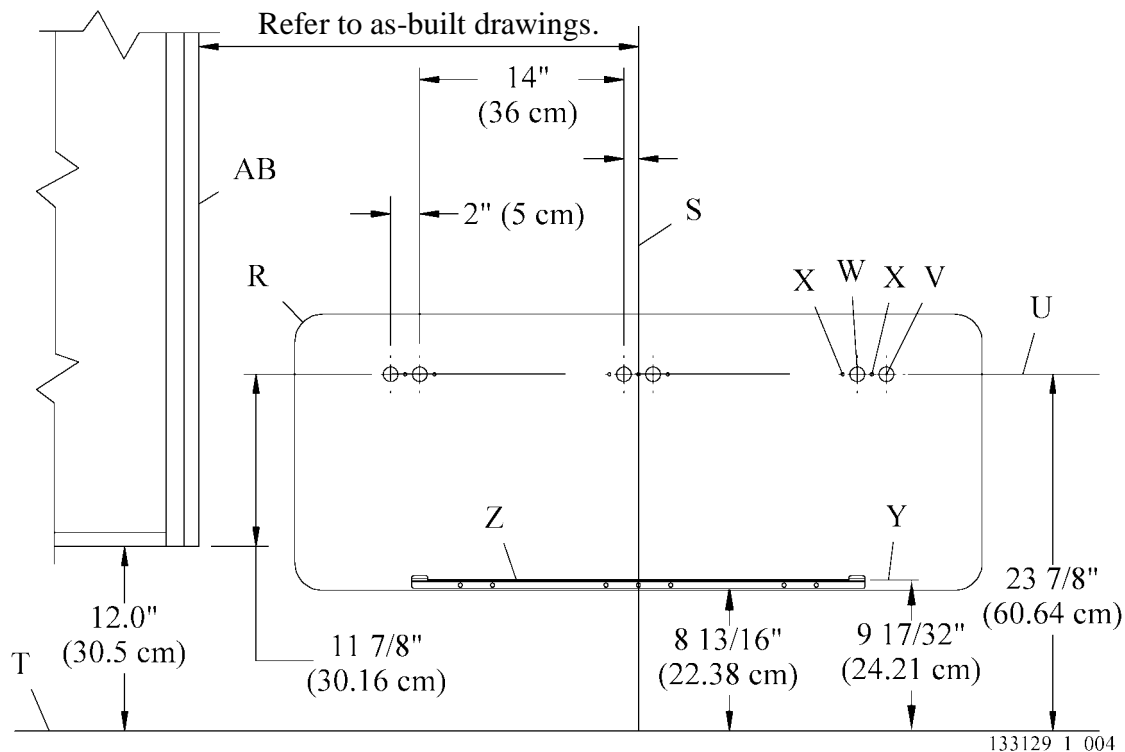
Make sure the self-drilling screws go through the wall stud or backing plate. Failure to do so could result in personal injury or equipment damage.

4. At the mounting holes (X), use a standard drill with a 5/16" hex nut driver to install two #12 self-drilling screws (A) at a location free from obstruction to attach the back plate assembly (R) to the wall studs or backing plate.
5. Go to "Final Steps" on page 23.

Install the Bed Locator with the Integris® 2001B/2002B Headwall System or Flatwall Headwall System

1. Mark the bed centerline (S) (see figure 4 on page 14):

Figure 4. Typical Installation Dimensions



- a. Refer to the as-built drawings, and determine the bed centerline (S) as it relates to the back plate assembly (R).
 - b. If a finished floor has **not** been installed, make a mark to show the location of the intended finished floor line (T).
 - c. Use a 4' (122 cm) level and pencil to make a plumb vertical bed centerline (S) on the wall 25" (64 cm) up from the floor line (T).
2. Measure 23 7/8" (60.64 cm) from the floor line (T) up the wall, and make a mark to show its location on the bed centerline (S).
 3. At the mark on the bed centerline (S), use a 4' (122 cm) level and pencil to make a plumb line from the side of the headwall system (AB) at least 47" (119 cm) across the wall to show the horizontal centerline (U) of the mounting holes (V), (W), and (X).
 4. Measure 9 17/32" (24.21 cm) from the floor line (T) up the wall, and make a mark to show the location on the bed centerline (S).

- Use a 4' (122 cm) level and pencil to make a plumb line at least 20" (51 cm) on both sides of the mark to show the top horizontal centerline (Y) of the installation guide bracket (Z).

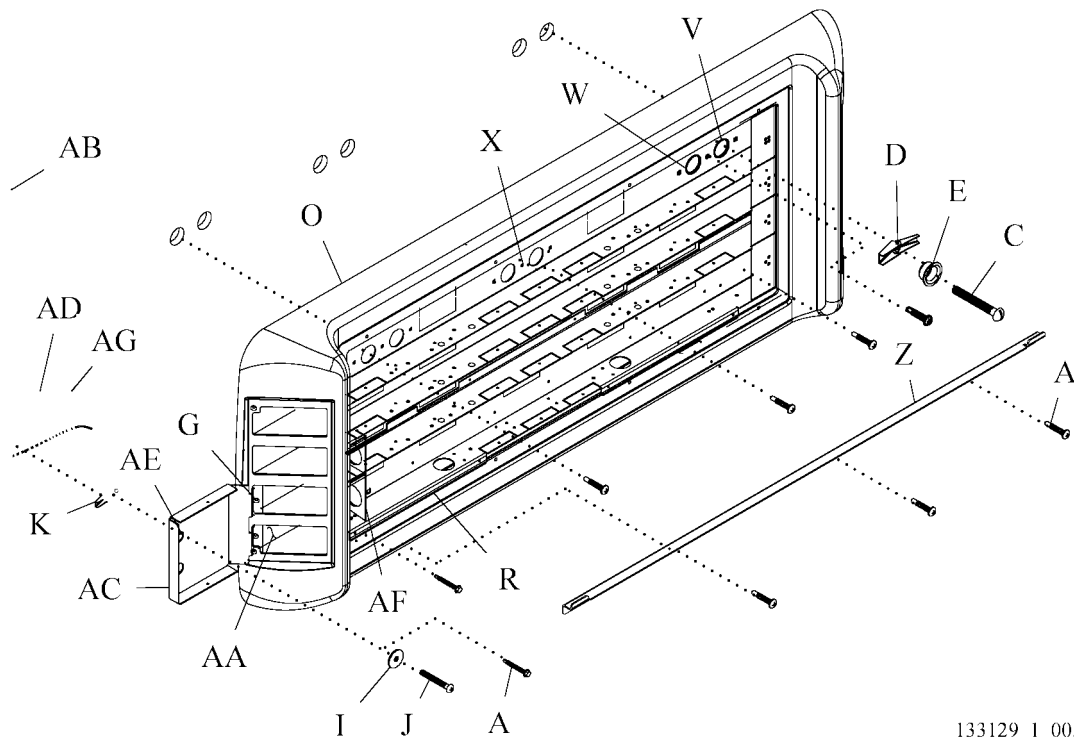


WARNING:

Wear eye protection. Failure to do so could result in eye injury.

- Put on safety glasses.
- Align the installation guide bracket (Z) with the centerlines (S) and (Y).
- Use a standard drill with a 5/16" hex nut driver to install three #12 self-drilling screws (A) at a location free from obstruction to attach the installation guide bracket (Z) to the wall (see figure 5 on page 15).

Figure 5. Headwall System Interconnect



133129_1_005

- Install two truss head screws (G) to attach the backplate (AC) to the picture frame cover (O).



WARNING:

The installation method differs for each wall and construction type. Failure to install the bed locator according to the applicable wall and construction type could cause the bed locator to collapse. Personal injury or equipment damage could occur.

10. Do **one** of these:
 - For **non-fire-rated** and **non-seismic-rated** dry wall, go to step 11.
 - For **seismic-rated** and **fire-rated** dry wall, go to step 15.
11. Use the bed centerline (S) as a reference, and make marks to show all six primary mounting holes (V) and secondary mounting holes (W) for the back plate assembly (R) (see figure 4 on page 14).



WARNING:

Wear eye protection. Failure to do so could result in eye injury.

12. Put on safety glasses.
13. At each primary mounting hole (V) at a location free from obstruction, drill a 15/16" diameter hole. If an obstruction or wall stud is there, drill at the secondary mounting hole (W).
14. Clean up any debris from drilling.



WARNING:

Do not leave the back plate assembly unattended in the installation guide bracket and not attached to the wall. The back plate assembly could fall, resulting in personal injury or equipment damage.

15. Put the back plate assembly (R) and picture frame cover (O) in the installation guide bracket (Z) (see figure 5 on page 15).
16. Align the back plate assembly (R) with the centerlines (S) and (U) (see figure 4 on page 14).



WARNING:

In accordance with National Fire Protection Association (NFPA) 70, *National Electrical Code*^{®1} (NEC^{®2}), do **not** mix different services, such as critical power, low voltage, or normal power, in the same raceway level of the back plate assembly. Personal injury or equipment damage could occur.

17. Pull the wiring and conduit (AD) from the headwall system (AB) through the side of the picture frame cover (O) (see figure 5 on page 15). Do **not** mix different services in the same raceway level of the back plate assembly (R).

1. National Electrical Code[®] is a registered trademark of National Fire Protection Association, Inc.

2. NEC[®] is a registered trademark of National Fire Protection Association, Inc.



WARNING:

The installation method differs for each wall and construction type. Failure to install the bed locator according to the applicable wall and construction type could cause the bed locator to collapse. Personal injury or equipment damage could occur.

18. On **seismic-rated** dry wall, do as follows:
 - a. Use a standard drill with a 5/16" hex nut driver to install three #12 self-drilling screws (A) through the mounting holes (X) at a location free from obstruction to attach the back plate assembly (R) to the wall.
 - b. Go to step 21.

19. On **non-seismic-rated** and **non-fire-rated** dry wall, do as follows:
 - a. Assemble the round head screws (C), stud guides (E), and toggle wings (D). Leave enough room for the toggle wings (D) to fully expand when installed.
 - b. At the mounting holes (V) and/or (W), remove the knockout. Then install the round head screws (C), stud guides (E), and toggle wings (D) to attach the back plate assembly (R) to the wall.



WARNING:

The toggle wings must fully expand inside the wall. If the toggle wings do **not** fully expand, the bed locator could collapse. Personal injury or equipment damage could occur.

- c. Make sure the toggle wings (D) fully expand inside the wall.
 - d. Tighten the round head screws (C).

20. On **fire-rated** dry wall, do as follows:



WARNING:

Wear eye protection. Failure to do so could result in eye injury.

- a. Put on safety glasses.



WARNING:

Make sure the self-drilling screws go through the wall stud or backing plate. Failure to do so could result in personal injury or equipment damage.

- b. At the mounting holes (X), use a standard drill with a 5/16" hex nut driver to install two #12 self-drilling screws (A) at a location free from obstruction to attach the back plate assembly (R) to the wall studs or backing plate.

21. Find the wall studs that are furthest from the bed centerline (S) and within the area of the back plate assembly (R) (see figure 4 on page 14).
22. At the wall studs, drill two 1/4" diameter holes in the lowest raceway (AA) of the back plate assembly (R) at a location free from obstruction (see figure 5 on page 15).



WARNING:

Make sure the self-drilling screws go through the wall stud or backing plate. Failure to do so could result in personal injury or equipment damage.

23. Use a standard drill with a 5/16" hex nut driver to install two #12 self-drilling screws (A) to attach the lowest raceway (AA) to the wall studs or backing plate.



WARNING:

The installation method differs for each wall and construction type. Failure to install the bed locator according to the applicable wall and construction type could cause the bed locator to collapse. Personal injury or equipment damage could occur.

24. On **non-seismic** or **non-fire-rated** dry wall, do as follows:
 - a. Find the two holes (AE) in the backplate (AC).
 - b. At either hole (AE), drill a 5/8" diameter hole into the wall at a location free from obstruction.
 - c. Assemble the #10 round head screw (J), washer (I), and toggle snap wing (K). Leave enough room for the toggle snap wing (K) to fully expand when installed.
 - d. Install the round head screw (J), washer (I), and toggle snap wing (K) to attach the backplate (AC) to the wall.



WARNING:

The toggle snap wing must fully expand inside the wall. If the toggle snap wing does **not** fully expand, the bed locator could collapse. Personal injury or equipment damage could occur.

- e. Make sure the toggle snap wing (K) fully expands inside the wall.
- f. Tighten the cross head screw (J).
- g. Go to step 26.

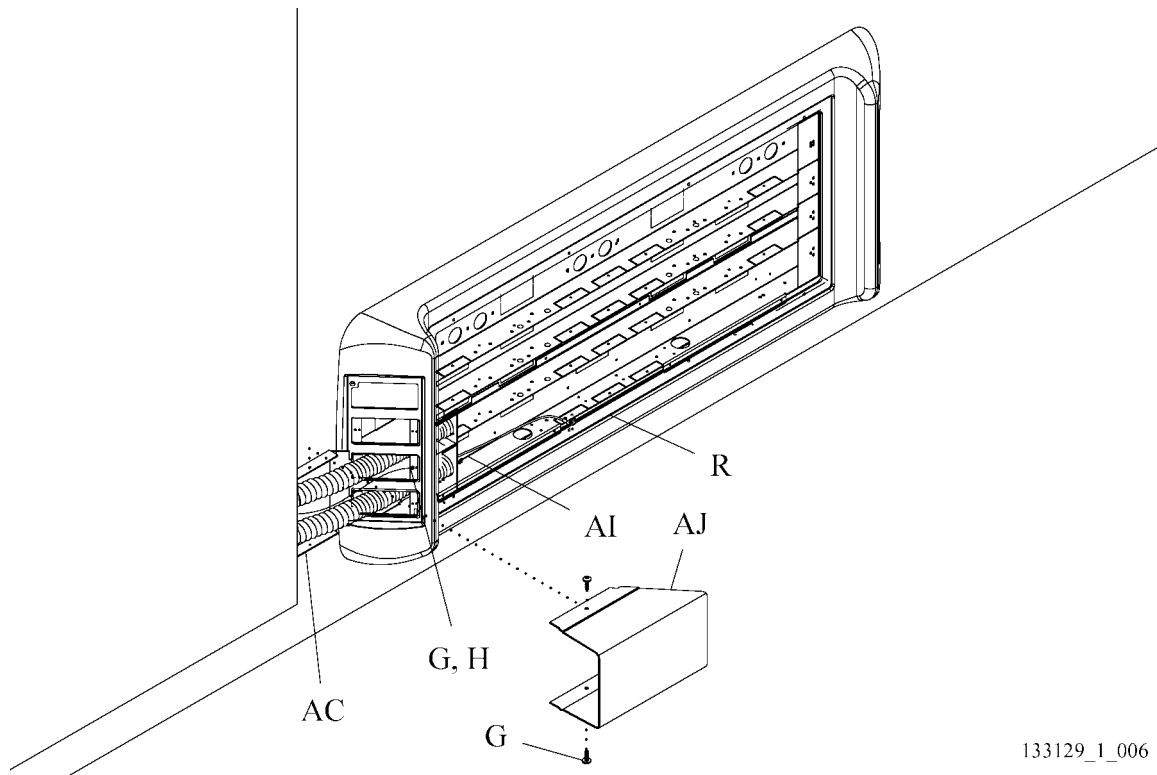


WARNING:

Make sure the self-drilling screws go through the wall stud or backing plate. Failure to do so could result in personal injury or equipment damage.

25. On **seismic-rated** or **fire-rated** dry wall, at a location free from obstruction, use a standard drill with a 5/16" hex nut driver to install the two #12 self-drilling screws (A) to attach the backplate (AC) to the wall stud or backing plate.
26. Remove the conduit connector brackets (AF) from the back plate assembly (R).
27. Tighten the locknuts (AG) on the ends of headwall system conduit (AD) to attach them to the conduit connector brackets (AF).
28. Install the conduit connector brackets (AF) on the back plate assembly (R).
29. Install a truss head screw (G) and lockwasher (H) to attach the ground wires (AI) to the back plate assembly (R) (see figure 6 on page 19).

Figure 6. Conduit



133129_1_006

30. Install the two truss head screws (G) to attach the raceway cover (AJ) to the backplate (AC).
31. Go to “Final Steps” on page 23.

Install the Bed Locator on the ImageBuilders™ Cabinet Headwall Collection

1. Find the openings in the front of the center cabinet (AK) (see figure 7 on page 21).
2. Halfway between the two rows of openings, use a 4' (122 cm) level and pencil to make a vertical plumb line to show the bed centerline (S).
3. Remove the knockouts from the back plate assembly (R) that align with the junction boxes (AL) in the center cabinet (AK).



SHOCK HAZARD:

Failure to make sure no electrical power is supplied to the facility wiring could result in personal injury or equipment damage.

4. Make sure no electrical power is supplied to the facility wiring. If necessary, tag out and lock out the power to the circuits in the center cabinet (AK).
5. Use a 4' (122 cm) level and pencil to make a plumb line at least 20" (51 cm) on both sides of the mark to show the horizontal centerline (Y) of the installation guide bracket (Z).
6. Align the installation guide bracket (Z) with the centerlines (S) and (Y).
7. Use a standard drill with a 5/16" hex nut driver to install three #12 self-drilling screws (A) at a location free from obstruction to attach the installation guide bracket (Z) to the center cabinet (AK).



WARNING:

Do not leave the back plate assembly unattended in the installation guide bracket and not attached to the center cabinet. The back plate assembly could fall, resulting in personal injury or equipment damage.

8. Put the back plate assembly (R) in the installation guide bracket (Z).
9. Align the back plate assembly (R) with the centerlines (S) and (U).
10. If it is necessary to drill mounting holes in the center cabinet (AK), do as follows:
 - a. Use the bed centerline (S) as a reference, and make marks to show all six primary mounting holes (V) and secondary mounting holes (W) for the back plate assembly (R).



WARNING:

Wear eye protection. Failure to do so could result in eye injury.

- b. Put on safety glasses.



WARNING:

Before drilling, examine the center cabinet for obstructions at the marks. Failure to do so could result in equipment damage.

- c. At the marks, examine the interior of the center cabinet (AK) for obstructions.
 - d. At each pair of marks, drill **one** 15/16" diameter hole at the mounting hole (V) or (W) that is free from obstruction.
 - e. Clean up any debris from drilling.
11. Install the flat head screws (F) to attach the necessary face rings (P) to the junction boxes (AL).
 12. Install the grommet edging around each removed knockout.
 13. Measure 9 17/32" (24.21 cm) up from the bottom of the center cabinet (AK), and make a mark to show its location on the bed centerline (S).
 14. Assemble the round head screws (C), stud guides (E), and toggle wings (D). Leave enough room from the toggle wing (D) to fully expand when installed.
 15. At the mounting holes (V) and/or (W), remove the knockout. Then install the round head screws (C), stud guides (E), and toggle wings (D) to attach the back plate assembly (R) to the center cabinet (AK).



WARNING:

The toggle wings must fully expand inside the center cabinet. If the toggle wings do **not** fully expand, the bed locator could collapse. Personal injury or equipment damage could occur.

16. Make sure the toggle wings (D) fully expand inside the center cabinet (AK).
17. Tighten the round head screws (C).
18. Measure 16" (41 cm) from the bed centerline (S) on each side of the center cabinet (AK), and make marks to show the location of the lowest raceway (AA) of the back plate assembly (R).
19. At the marks, drill a 1/4" hole through the back of the back plate assembly (R) at a location free from obstruction.
20. Install two #8 pan head screws (L) to attach the lowest raceway (AA) to the center cabinet (AK).
21. Go to "Final Steps" on page 23.

Final Steps

1. Refer to the as-built drawings, and determine the bed locator's internal wiring configuration and hook-up information.



WARNING:

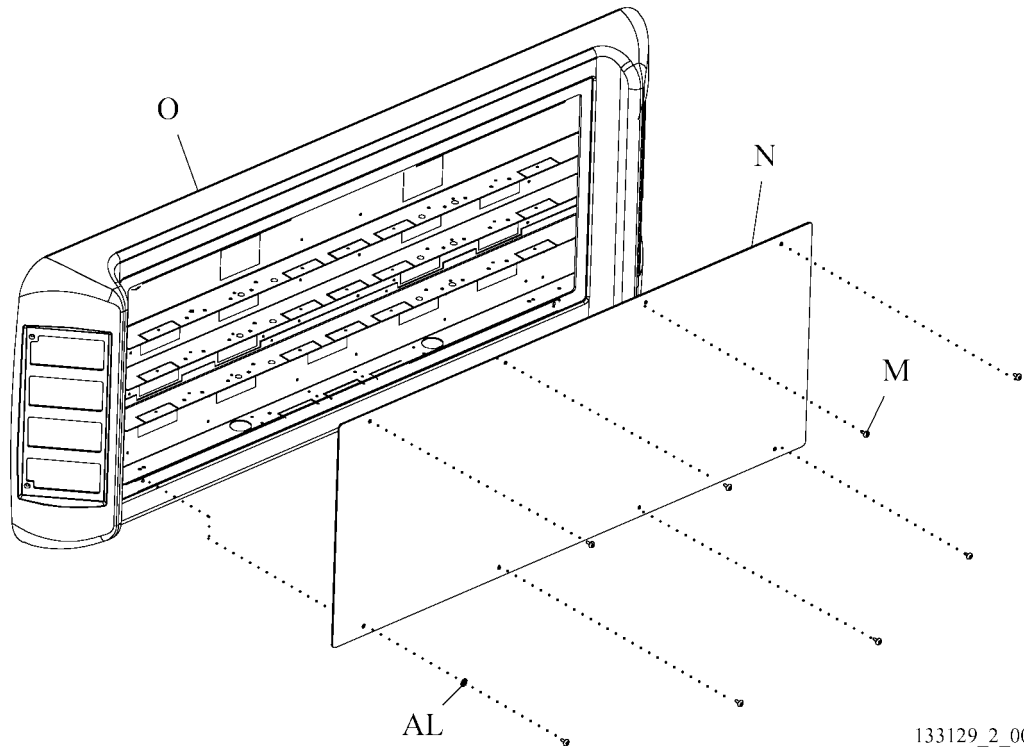
Failure to connect the electrical wiring correctly could result in personal injury or equipment damage.

2. Have the **electrical contractor** connect all the wiring from the wall boxes (Q) to the back plate assembly (R) according to the applicable state and local codes, and these (see figure 2 on page 8):
 - NFPA 70, *National Electrical Code*®¹ (NEC®²)
 - CSA 22.1, *Canadian Electrical Code—Safety Standard for Electrical Installations*
 - CSA Z318.7, *Commissioning of Communication Systems in Health Care Facilities*
3. If the bed is wired for isolated power, go to step 5.
4. Install the eight #8 truss head screws (M) to attach the access panel (N) to the picture frame cover (O) (see figure 8 on page 24).
5. For a bed locator wired for isolated power, install the eight #8 truss head screws (M) to attach the access panel (N) to the picture frame cover (O). Then add one external tooth lockwasher (AL) to the lower left corner screw (see figure 8 on page 24).

1. National Electrical Code® is a registered trademark of National Fire Protection Association, Inc.

2. NEC® is a registered trademark of National Fire Protection Association, Inc.

Figure 8. Access Panel



133129_2_001